

## EGLN3 Rabbit Polyclonal Antibody

Catalog No: #55398



Package Size: #55398-1 50ul #55398-2 100ul

Orders: [order@signalwayantibody.com](mailto:order@signalwayantibody.com)Support: [tech@signalwayantibody.com](mailto:tech@signalwayantibody.com)

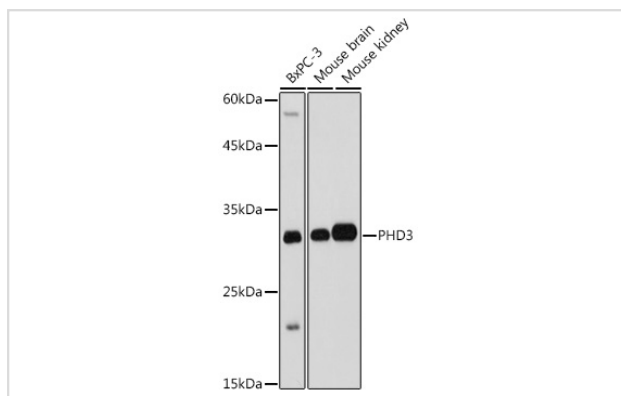
## Description

Product Name	EGLN3 Rabbit Polyclonal Antibody
Host Species	Rabbit
Clonality	Polyclonal
Isotype	IgG
Purification	Affinity purification
Applications	WB,IHC,IF
Species Reactivity	Human,Mouse,Rat
Immunogen Description	Recombinant fusion protein of human PHD3 (NP_071356.1).
Other Names	EGLN3;HIFP4H3;HIFPH3;PHD3
Accession No.	Uniprot:Q9H6Z9GeneID:112399
Calculated MW	27kDa
SDS-PAGE MW	32KDa
Formulation	PBS with 0.02% sodium azide,50% glycerol,pH7.3.
Storage	Store at -20°C. Avoid freeze / thaw cycles.

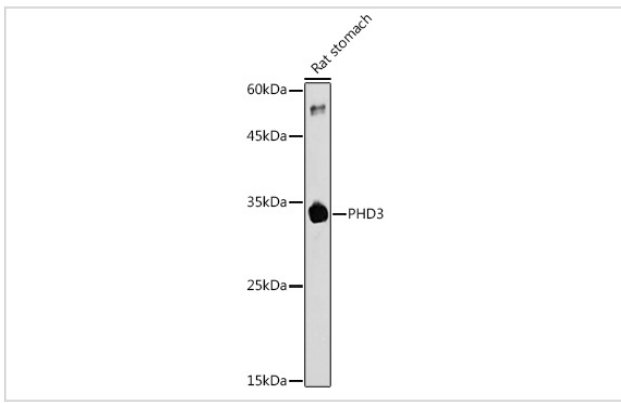
## Application Details

WB □ 1:500 - 1:2000 IHC □ 1:50 - 1:200 IF □ 1:50 - 1:200

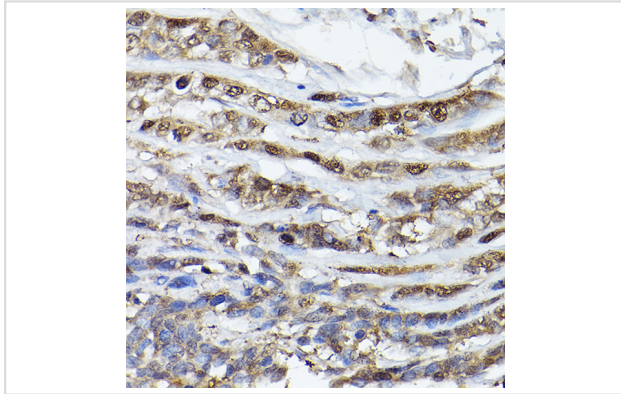
## Images



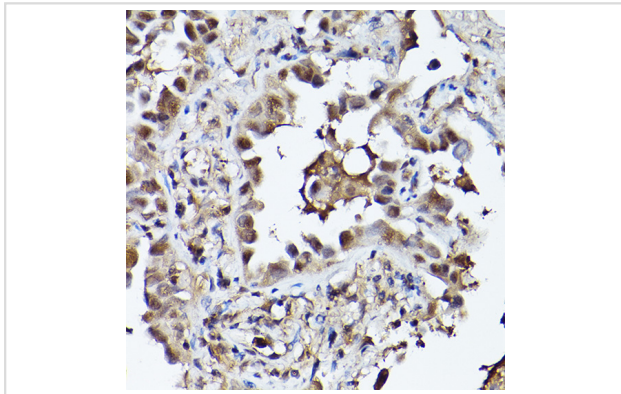
Western blot analysis of extracts of various cell lines, using PHD3 antibody.



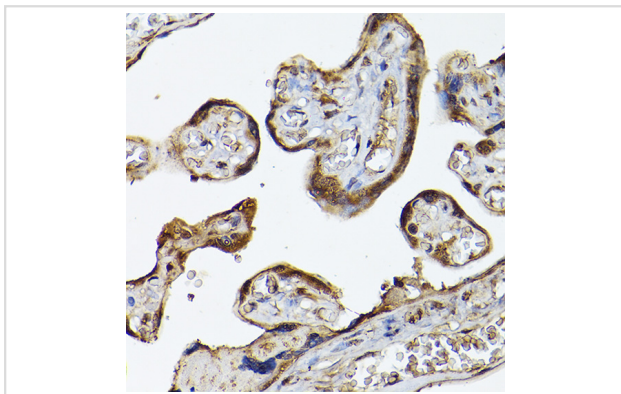
Western blot analysis of extracts of Rat stomach, using PHD3 antibody.



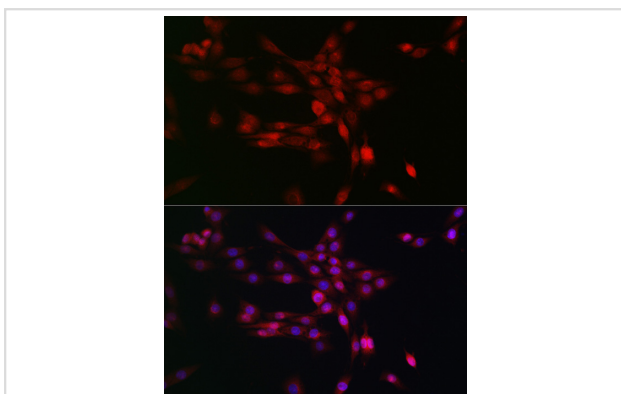
Immunohistochemistry of paraffin-embedded human esophageal cancer using PHD3 Rabbit pAb.



Immunohistochemistry of paraffin-embedded human lung cancer using PHD3 Rabbit pAb.



Immunohistochemistry of paraffin-embedded human placenta using PHD3 Rabbit pAb.



Immunofluorescence analysis of PC-12 cells using PHD3 Rabbit pAb.

---

Note: This product is for in vitro research use only and is not intended for use in humans or animals.