

## DIS3 Rabbit Polyclonal Antibody

Catalog No: #55403

Package Size: #55403-1 50ul #55403-2 100ul

Orders: [order@signalwayantibody.com](mailto:order@signalwayantibody.com)Support: [tech@signalwayantibody.com](mailto:tech@signalwayantibody.com)

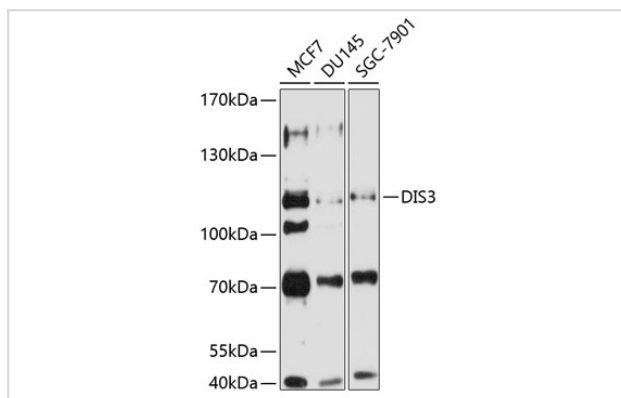
## Description

Product Name	DIS3 Rabbit Polyclonal Antibody
Host Species	Rabbit
Clonality	Polyclonal
Isotype	IgG
Purification	Affinity purification
Applications	WB,IHC
Species Reactivity	Human,Mouse,Rat
Immunogen Description	Recombinant fusion protein of human DIS3 (NP_055768.3).
Other Names	DIS3;2810028N01Rik;EXOSC11;KIAA1008;RRP44;dis3p
Accession No.	Swiss Prot:Q9Y2L1GeneID:22894
Calculated MW	105kDa/109kDa
SDS-PAGE MW	109kDa
Formulation	Buffer: PBS with 0.02% sodium azide,50% glycerol,pH7.3.
Storage	Store at -20°C. Avoid freeze / thaw cycles.

## Application Details

WB □ 1:1000 - 1:2000 IHC □ 1:50 - 1:200

## Images



Western blot analysis of extracts of various cell lines, using DIS3 at 1:1000 dilution.

## Background

-

---

Note: This product is for in vitro research use only and is not intended for use in humans or animals.