

MBNL1 Rabbit Polyclonal Antibody

Catalog No: #55408

Package Size: #55408-1 50ul #55408-2 100ul

Orders: order@signalwayantibody.comSupport: tech@signalwayantibody.com

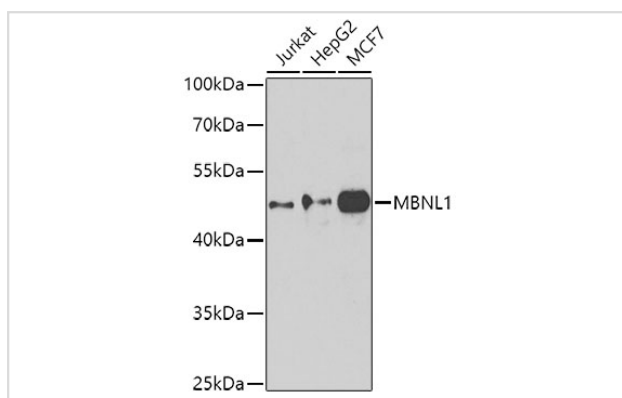
Description

Product Name	MBNL1 Rabbit Polyclonal Antibody
Host Species	Rabbit
Clonality	Polyclonal
Isotype	IgG
Purification	Affinity purification
Applications	WB,IF
Species Reactivity	Human,Mouse,Rat
Immunogen Description	Recombinant fusion protein of human MBNL1 (NP_066368.2).
Other Names	MBNL1;EXP;MBNL
Accession No.	Uniprot:Q9NR56GeneID:4154
Calculated MW	33kDa/34kDa/36kDa/37kDa/39kDa/40kDa/41kDa
SDS-PAGE MW	42kDa
Formulation	PBS with 0.02% sodium azide,50% glycerol,pH7.3.
Storage	Store at -20°C. Avoid freeze / thaw cycles.

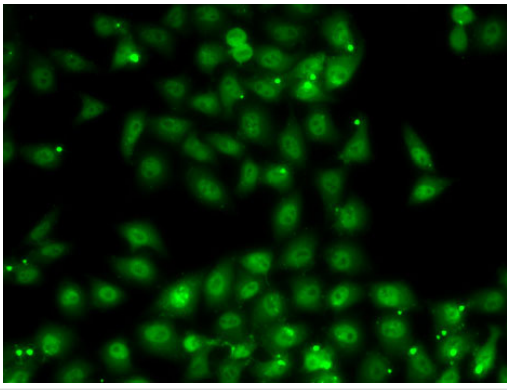
Application Details

WB □ 1:500 - 1:2000 IF □ 1:50 - 1:100

Images



Western blot analysis of extracts of various cell lines, using MBNL1 antibody.



Immunofluorescence analysis of MCF7 cells using MBNL1 antibody.

Background

This gene encodes a member of the muscleblind protein family which was initially described in *Drosophila melanogaster*. The encoded protein is a C3H-type zinc finger protein that modulates alternative splicing of pre-mRNAs. Muscleblind proteins bind specifically to expanded dsCUG RNA but not to normal size CUG repeats and may thereby play a role in the pathophysiology of myotonic dystrophy. Mice lacking this gene exhibited muscle abnormalities and cataracts. Several alternatively spliced transcript variants have been described but the full-length natures of only some have been determined. The different isoforms are thought to have different binding specificities and/or splicing activities.

Note: This product is for in vitro research use only and is not intended for use in humans or animals.