

NEDD4L Rabbit Polyclonal Antibody

Catalog No: #55415

Package Size: #55415-1 50ul #55415-2 100ul

Orders: order@signalwayantibody.comSupport: tech@signalwayantibody.com

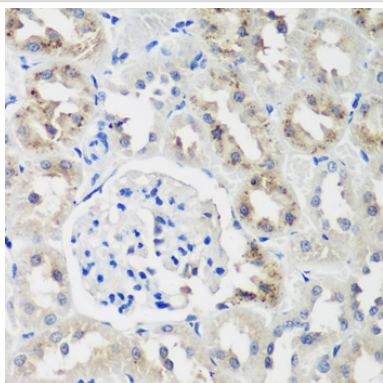
Description

Product Name	NEDD4L Rabbit Polyclonal Antibody
Host Species	Rabbit
Clonality	Polyclonal
Isotype	IgG
Purification	Affinity purification
Applications	WB,IHC,IF
Species Reactivity	Human,Mouse,Rat
Immunogen Description	Recombinant fusion protein of human NEDD4L (NP_056092.2).
Other Names	NEDD4L;NEDD4-2;NEDD4.2;PVNH7;RSP5;hNEDD4-2
Accession No.	Swiss Prot:Q96PU5GeneID:23327
Calculated MW	96-111kDa
SDS-PAGE MW	113kDa
Formulation	Buffer: PBS with 0.02% sodium azide,50% glycerol,pH7.3.
Storage	Store at -20°C. Avoid freeze / thaw cycles.

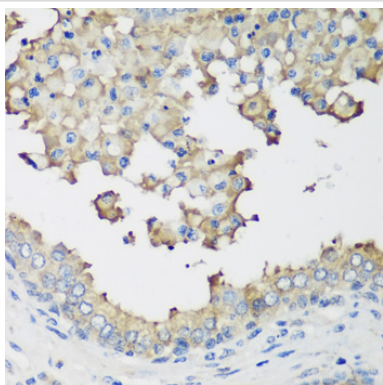
Application Details

WB□1:500 - 1:2000IHC□1:50 - 1:200IF□1:50 - 1:200

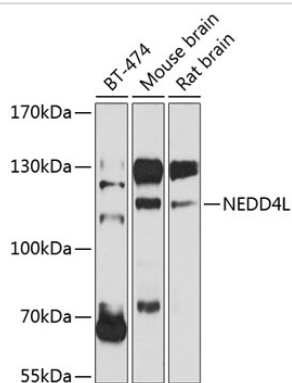
Images



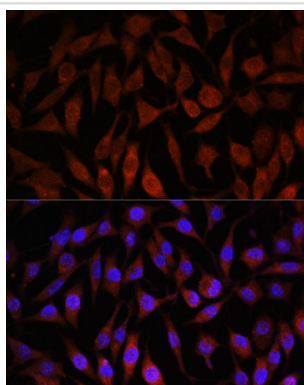
Immunohistochemistry of paraffin-embedded rat kidney using NEDD4L at dilution of 1:200 (40x lens).



Immunohistochemistry of paraffin-embedded human prostate using NEDD4L at dilution of 1:200 (40x lens).



Western blot analysis of extracts of various cell lines, using NEDD4L at 1:1000 dilution.



Immunofluorescence analysis of L929 cells using NEDD4L at dilution of 1:100. Blue: DAPI for nuclear staining.

Background

This gene encodes a member of the Nedd4 family of HECT domain E3 ubiquitin ligases. HECT domain E3 ubiquitin ligases transfer ubiquitin from E2 ubiquitin-conjugating enzymes to protein substrates, thus targeting specific proteins for lysosomal degradation. The encoded protein mediates the ubiquitination of multiple target substrates and plays a critical role in epithelial sodium transport by regulating the cell surface expression of the epithelial sodium channel, ENaC. Single nucleotide polymorphisms in this gene may be associated with essential hypertension. Alternatively spliced transcript variants encoding multiple isoforms have been observed for this gene.

Note: This product is for in vitro research use only and is not intended for use in humans or animals.