

DCP2 Rabbit Polyclonal Antibody

Catalog No: #55468

Package Size: #55468-1 50ul #55468-2 100ul

Orders: order@signalwayantibody.comSupport: tech@signalwayantibody.com

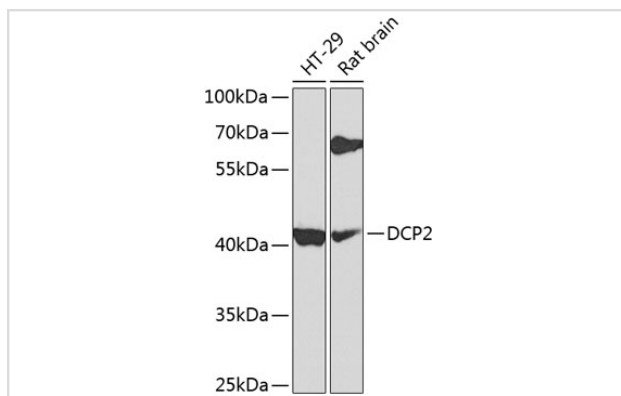
Description

Product Name	DCP2 Rabbit Polyclonal Antibody
Host Species	Rabbit
Clonality	Polyclonal
Isotype	IgG
Purification	Affinity purification
Applications	WB
Species Reactivity	Human,Mouse,Rat
Immunogen Description	Recombinant fusion protein of human DCP2 (NP_001229306.1).
Other Names	DCP2;NUDT20
Accession No.	Uniprot:Q8IU60GeneID:167227
Calculated MW	44kDa/48kDa
SDS-PAGE MW	50kDa
Formulation	PBS with 0.02% sodium azide,50% glycerol,pH7.3.
Storage	Store at -20°C. Avoid freeze / thaw cycles.

Application Details

WB □ 1:500 - 1:2000

Images



Western blot analysis of extracts of various cell lines, using DCP2 antibody.

Background

The protein encoded by this gene is a key component of an mRNA-decapping complex required for degradation of mRNAs, both in normal mRNA turnover, and in nonsense-mediated mRNA decay (NMD). It removes the 7-methyl guanine cap structure from mRNA, prior to its degradation from the 5' end. Alternatively spliced transcript variants encoding different isoforms have been noted for this gene.

Note: This product is for in vitro research use only and is not intended for use in humans or animals.