

NEFH Rabbit Polyclonal Antibody

Catalog No: #55517



Package Size: #55517-1 50ul #55517-2 100ul

Orders: order@signalwayantibody.com

Support: tech@signalwayantibody.com

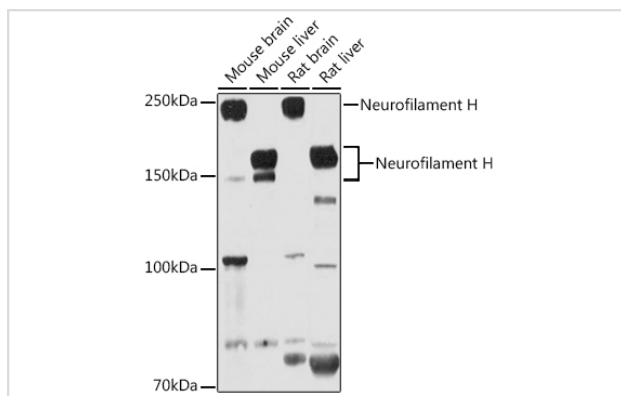
Description

Product Name	NEFH Rabbit Polyclonal Antibody
Host Species	Rabbit
Clonality	Polyclonal
Isotype	IgG
Purification	Affinity purification
Applications	WB,IF
Species Reactivity	Human,Mouse,Rat
Immunogen Description	Recombinant fusion protein of human Neurofilament H (NP_066554.2).
Other Names	CMT2CC;NFH;NEFH
Accession No.	Uniprot:P12036GeneID:4744
Calculated MW	105kDa/112kDa
SDS-PAGE MW	150KDa/220KDa
Formulation	PBS with 0.02% sodium azide,50% glycerol,pH7.3.
Storage	Store at -20°C. Avoid freeze / thaw cycles.

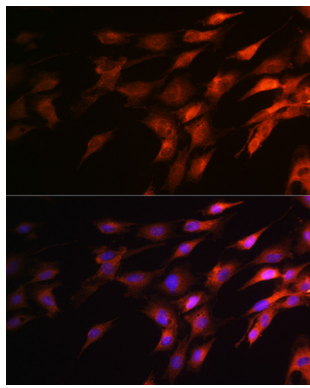
Application Details

WB □ 1:500 - 1:2000 IF □ 1:50 - 1:100

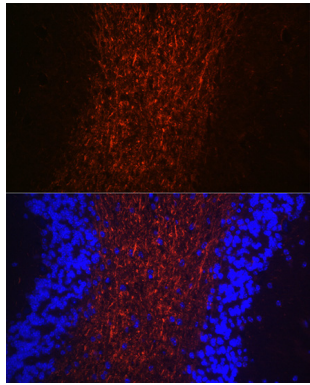
Images



Western blot analysis of extracts of various cell lines, using Neurofilament H antibody.



Immunofluorescence analysis of C6 cells using Neurofilament H Rabbit pAb.



Immunofluorescence analysis of mouse brain using Neurofilament H Rabbit pAb.

Background

Neurofilaments are type IV intermediate filament heteropolymers composed of light, medium, and heavy chains. Neurofilaments comprise the axoskeleton and functionally maintain neuronal caliber. They may also play a role in intracellular transport to axons and dendrites. This gene encodes the heavy neurofilament protein. This protein is commonly used as a biomarker of neuronal damage and susceptibility to amyotrophic lateral sclerosis (ALS) has been associated with mutations in this gene.

Note: This product is for in vitro research use only and is not intended for use in humans or animals.