

## MTIF3 Rabbit Polyclonal Antibody

Catalog No: #55531

Package Size: #55531-1 50ul #55531-2 100ul

Orders: [order@signalwayantibody.com](mailto:order@signalwayantibody.com)Support: [tech@signalwayantibody.com](mailto:tech@signalwayantibody.com)

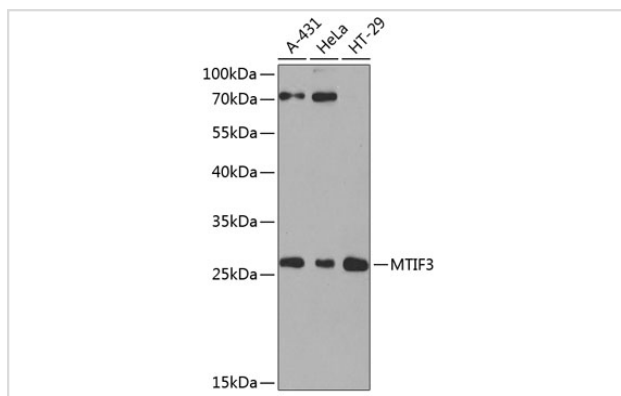
## Description

Product Name	MTIF3 Rabbit Polyclonal Antibody
Host Species	Rabbit
Clonality	Polyclonal
Isotype	IgG
Purification	Affinity purification
Applications	WB
Species Reactivity	Human,Rat
Immunogen Description	Recombinant fusion protein of human MTIF3 (NP_690876.3).
Other Names	MTIF3;IF3mt
Accession No.	Uniprot:Q9H2K0GeneID:219402
Calculated MW	31kDa
SDS-PAGE MW	32kDa
Formulation	PBS with 0.02% sodium azide,50% glycerol,pH7.3.
Storage	Store at -20°C. Avoid freeze / thaw cycles.

## Application Details

WB □ 1:500 - 1:2000

## Images



Western blot analysis of extracts of various cell lines, using MTIF3 antibody.

## Background

This gene encodes a translation initiation factor that is involved in mitochondrial protein synthesis. Polymorphism in this gene is associated with the onset of Parkinson's disease. Alternate splicing results in multiple transcript variants. A pseudogene of this gene is found on chromosome 5.

---

Note: This product is for in vitro research use only and is not intended for use in humans or animals.