

MARVELD2 Rabbit Polyclonal Antibody

Catalog No: #55577

Package Size: #55577-1 50ul #55577-2 100ul

Orders: order@signalwayantibody.comSupport: tech@signalwayantibody.com

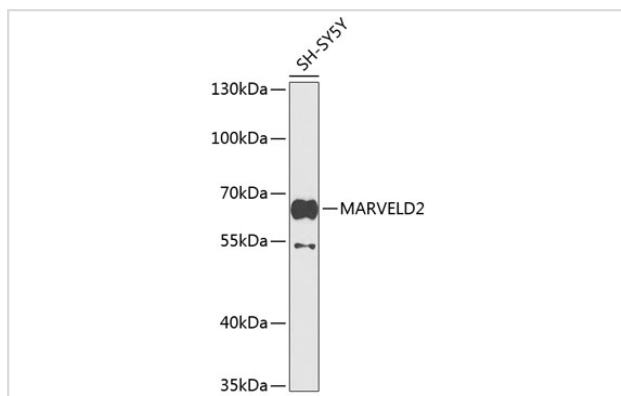
Description

Product Name	MARVELD2 Rabbit Polyclonal Antibody
Host Species	Rabbit
Clonality	Polyclonal
Isotype	IgG
Purification	Affinity purification
Applications	WB
Species Reactivity	Human,Mouse,Rat
Immunogen Description	A synthetic peptide of human MARVELD2 (NP_001033692.2).
Other Names	MARVELD2;DFNB49;MARVD2;MRVLDC2;Tric
Accession No.	Uniprot:Q8N4S9GeneID:153562
Calculated MW	51kDa/62kDa/64kDa
SDS-PAGE MW	64kDa
Formulation	PBS with 0.02% sodium azide,50% glycerol,pH7.3.
Storage	Store at -20°C. Avoid freeze / thaw cycles.

Application Details

WB □ 1:500 - 1:2000

Images



Western blot analysis of extracts of SH-SY5Y cells, using MARVELD2 antibody.

Background

The protein encoded by this gene is a membrane protein found at the tight junctions between epithelial cells. The encoded protein helps establish epithelial barriers such as those in the organ of Corti, where these barriers are required for normal hearing. Defects in this gene are a cause of deafness autosomal recessive type 49 (DFNB49). Two transcript variants encoding different isoforms have been found for this gene.

Note: This product is for in vitro research use only and is not intended for use in humans or animals.