

EPB41L2 Rabbit Polyclonal Antibody

Catalog No: #55586



Package Size: #55586-1 50ul #55586-2 100ul

Orders: order@signalwayantibody.com

Support: tech@signalwayantibody.com

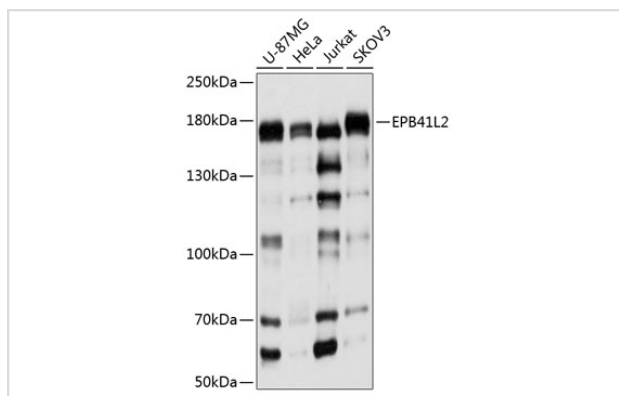
Description

Product Name	EPB41L2 Rabbit Polyclonal Antibody
Host Species	Rabbit
Clonality	Polyclonal
Isotype	IgG
Purification	Affinity purification
Applications	WB,IF
Species Reactivity	Human
Immunogen Description	Recombinant fusion protein of human EPB41L2 (NP_001186317.1).
Other Names	EPB41L2;4.1-G;4.1G
Accession No.	Swiss Prot:O43491GeneID:2037
Calculated MW	76kDa/83kDa/95kDa/112kDa
SDS-PAGE MW	180kDa
Formulation	Buffer: PBS with 0.02% sodium azide,50% glycerol,pH7.3.
Storage	Store at -20°C. Avoid freeze / thaw cycles.

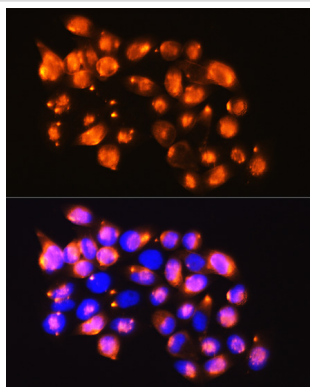
Application Details

WB □ 1:200 - 1:2000 IF □ 1:50 - 1:200

Images



Western blot analysis of extracts of various cell lines, using EPB41L2 at 1:1000 dilution.



Immunofluorescence analysis of HeLa cells using EPB41L2 at dilution of 1:100. Blue: DAPI for nuclear staining.

Background

-

Note: This product is for in vitro research use only and is not intended for use in humans or animals.