

MAPRE3 Rabbit Polyclonal Antibody

Catalog No: #55605

Package Size: #55605-1 50ul #55605-2 100ul

Orders: order@signalwayantibody.comSupport: tech@signalwayantibody.com

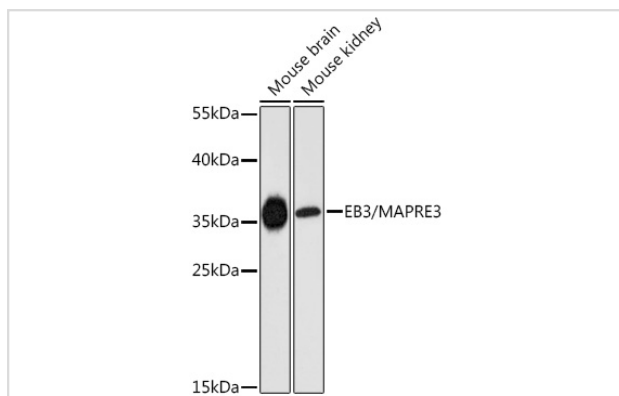
Description

Product Name	MAPRE3 Rabbit Polyclonal Antibody
Host Species	Rabbit
Clonality	Polyclonal
Isotype	IgG
Purification	Affinity purification
Applications	WB
Species Reactivity	Mouse
Immunogen Description	Recombinant fusion protein of human EB3/EB3/MAPRE3 (NP_036458.2).
Other Names	MAPRE3;EB3;EBF3;EBF3-S;RP3
Accession No.	Uniprot:Q9UPY8GeneID:22924
Calculated MW	30kDa/31kDa
SDS-PAGE MW	35kDa
Formulation	PBS with 0.02% sodium azide,50% glycerol,pH7.3.
Storage	Store at -20°C. Avoid freeze / thaw cycles.

Application Details

WB □ 1:1000 - 1:3000

Images



Western blot analysis of extracts of various cell lines, using EB3/EB3/MAPRE3 antibody.

Background

The protein encoded by this gene is a member of the RP/EB family of genes. The protein localizes to the cytoplasmic microtubule network and binds APCL, a homolog of the adenomatous polyposis coli tumor suppressor gene.

Note: This product is for in vitro research use only and is not intended for use in humans or animals.