

DSG1 Rabbit Polyclonal Antibody

Catalog No: #55613



Package Size: #55613-1 50ul #55613-2 100ul

Orders: order@signalwayantibody.com

Support: tech@signalwayantibody.com

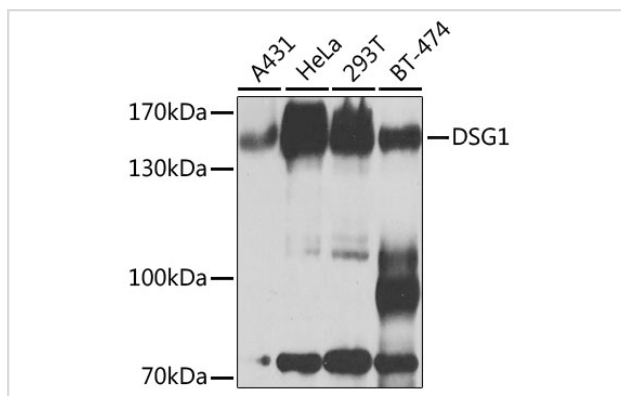
Description

Product Name	DSG1 Rabbit Polyclonal Antibody
Host Species	Rabbit
Clonality	Polyclonal
Isotype	IgG
Purification	Affinity purification
Applications	WB,IF
Species Reactivity	Human,Rat
Immunogen Description	Recombinant fusion protein of human DSG1 (NP_001933.2).
Other Names	DSG1;CDHF4;DG1;DSG;EPKHE;EPKHIA;PPKS1;SPPK1
Accession No.	Uniprot:Q02413GeneID:1828
Calculated MW	42kDa/113kDa
SDS-PAGE MW	150kDa
Formulation	PBS with 0.02% sodium azide,50% glycerol,pH7.3.
Storage	Store at -20°C. Avoid freeze / thaw cycles.

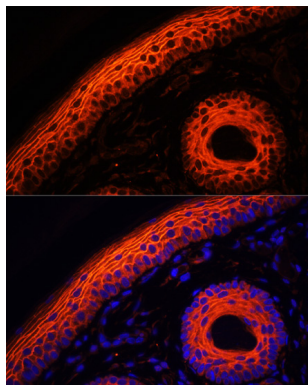
Application Details

WB 1:500 - 1:2000 IF 1:50 - 1:100

Images



Western blot analysis of extracts of various cell lines, using DSG1 antibody.



Immunofluorescence analysis of rat skin using DSG1 antibody.

Background

This gene encodes a member of the desmoglein protein subfamily. Desmogleins, along with desmocollins, are cadherin-like transmembrane glycoproteins that are major components of the desmosome. Desmosomes are cell-cell junctions that help resist shearing forces and are found in high concentrations in cells subject to mechanical stress. This gene is found in a cluster with other desmoglein family members on chromosome 18. The encoded protein has been identified as a target of auto-antibodies in the autoimmune skin blistering disease pemphigus foliaceus. Disruption of this gene has also been associated with the skin diseases palmoplantar keratoderma and erythroderma.

Note: This product is for in vitro research use only and is not intended for use in humans or animals.