

MAD2L2 Rabbit Polyclonal Antibody

Catalog No: #55626

Package Size: #55626-1 50ul #55626-2 100ul

Orders: order@signalwayantibody.comSupport: tech@signalwayantibody.com

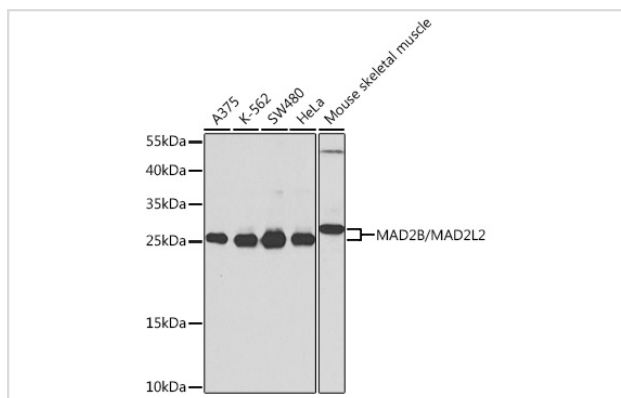
Description

Product Name	MAD2L2 Rabbit Polyclonal Antibody
Host Species	Rabbit
Clonality	Polyclonal
Isotype	IgG
Purification	Affinity purification
Applications	WB
Species Reactivity	Human,Mouse
Immunogen Description	Recombinant fusion protein of human MAD2B/MAD2B/MAD2L2 (NP_006332.3).
Other Names	MAD2L2;FANCV;MAD2B;POLZ2;REV7
Accession No.	Uniprot:Q9UI95GeneID:10459
Calculated MW	24kDa
SDS-PAGE MW	25kDa
Formulation	PBS with 0.02% sodium azide,50% glycerol,pH7.3.
Storage	Store at -20°C. Avoid freeze / thaw cycles.

Application Details

WB □ 1:500 - 1:2000

Images



Western blot analysis of extracts of various cell lines, using MAD2B/MAD2B/MAD2L2 antibody.

Background

The protein encoded by this gene is a component of the mitotic spindle assembly checkpoint that prevents the onset of anaphase until all chromosomes are properly aligned at the metaphase plate. The encoded protein, which is similar to MAD2L1, is capable of interacting with ADAM9, ADAM15, REV1, and REV3 proteins.

Note: This product is for in vitro research use only and is not intended for use in humans or animals.