

## EIF3L Rabbit Polyclonal Antibody

Catalog No: #55643

Package Size: #55643-1 50ul #55643-2 100ul

Orders: [order@signalwayantibody.com](mailto:order@signalwayantibody.com)Support: [tech@signalwayantibody.com](mailto:tech@signalwayantibody.com)

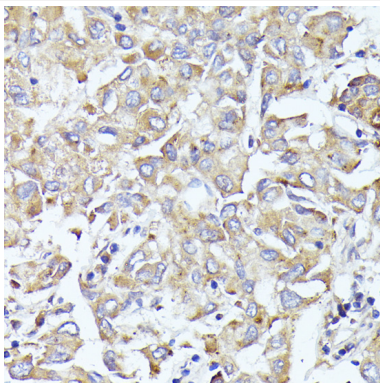
## Description

Product Name	EIF3L Rabbit Polyclonal Antibody
Host Species	Rabbit
Clonality	Polyclonal
Isotype	IgG
Purification	Affinity purification
Applications	WB,IHC
Species Reactivity	Human,Mouse,Rat
Immunogen Description	Recombinant fusion protein of human EIF3L (NP_057175.1).
Other Names	EIF3L;EIF3EIP;EIF3S11;EIF3S6IP;HSPC021;HSPC025;MSTP005
Accession No.	Swiss Prot:Q9Y262GeneID:51386
Calculated MW	61kDa/66kDa
SDS-PAGE MW	67kDa
Formulation	Buffer: PBS with 0.02% sodium azide,50% glycerol,pH7.3.
Storage	Store at -20°C. Avoid freeze / thaw cycles.

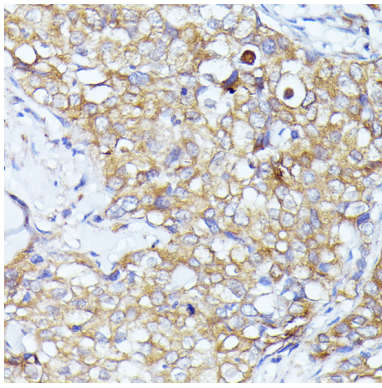
## Application Details

WB □ 1:1000 - 1:4000 IHC □ 1:50 - 1:200

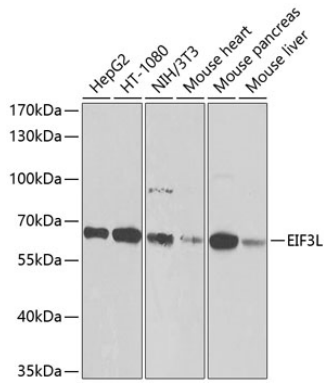
## Images



Immunohistochemistry of paraffin-embedded human liver cancer using EIF3L at dilution of 1:100 (40x lens).



Immunohistochemistry of paraffin-embedded human mammary cancer using EIF3L at dilution of 1:100 (40x lens).



Western blot analysis of extracts of various cell lines, using EIF3L at 1:1000 dilution.

## Background

Note: This product is for in vitro research use only and is not intended for use in humans or animals.