

IRF8 Antibody

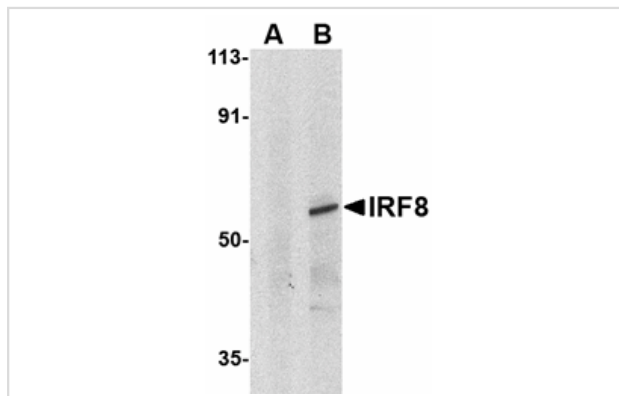
Catalog No: #24266

Orders: order@signalwayantibody.comSupport: tech@signalwayantibody.com

Description

Product Name	IRF8 Antibody
Host Species	Rabbit
Clonality	Polyclonal
Purification	Affinity chromatography purified via peptide column
Applications	ELISA WB
Species Reactivity	Hu Ms Rt
Immunogen Type	Peptide
Immunogen Description	Raised against a peptide corresponding to 16 amino acids near the carboxy terminus of human IRF8.
Target Name	IRF8
Accession No.	NP_002154
Concentration	1mg/ml
Formulation	Supplied in PBS containing 0.02% sodium azide.
Storage	Can be stored at -20°C, stable for one year. As with all antibodies care should be taken to avoid repeated freeze thaw cycles. Antibodies should not be exposed to prolonged high temperatures.

Images



Western blot analysis of IRF8 in human thymus tissue lysate with IRF8 antibody at 1ug/mL in (A) the presence and (B) absence of blocking peptide.

Background

Interferons (IFN)s are involved in a multitude of immune interactions during viral infections and play a major role in both the induction and regulation of innate and adaptive antiviral mechanisms. During infection, host-virus interactions signal downstream molecules such as transcription factors such as IFN regulatory factor-3 (IRF3) which can act to stimulate transcription of IFN-alpha/beta genes. Unlike IRF3, IRF8 appears to act as a negative regulator of IFN-induced genes in most cases, but IRF8 mediates activation of NF- κ B by the toll-like receptor 9 (TLR9) after stimulation by unmethylated CpG DNA in dendritic cells. Finally, it has been shown that IRF8 decreases bcl-2 expression and thus may play a role in chronic myelogenous leukemia.

Note: This product is for in vitro research use only and is not intended for use in humans or animals.