

p130 Cas (phospho Tyr249) Polyclonal Antibody

Catalog No: #13653



Package Size: #13653-1 50ul #13653-2 100ul

Orders: order@signalwayantibody.com

Support: tech@signalwayantibody.com

Description

| | |
|-----------------------|--|
| Product Name | p130 Cas (phospho Tyr249) Polyclonal Antibody |
| Host Species | Rabbit |
| Purification | The antibody was affinity-purified from rabbit antiserum by affinity-chromatography using epitope-specific immunogen. |
| Applications | WB,IHC-p,IF(paraffin section),ELISA |
| Species Reactivity | Human,Mouse,Rat |
| Specificity | Phospho-p130 Cas (Y249) Polyclonal Antibody detects endogenous levels of p130 Cas protein only when phosphorylated at Y249. |
| Immunogen Description | The antiserum was produced against synthesized peptide derived from human p130 Cas around the phosphorylation site of Tyr249. AA range:215-264 |
| Other Names | BCAR1; CAS; CASS1; CRKAS; Breast cancer anti-estrogen resistance protein 1; CRK-associated substrate; Cas scaffolding protein family member 1; p130cas |
| Accession No. | Swiss Prot:P56945GenelD:9564 |
| SDS-PAGE MW | 130 |
| Concentration | 1 mg/ml |
| Formulation | Liquid in PBS containing 50% glycerol, 0.5% BSA and 0.02% sodium azide. |
| Storage | -20°C/1 |

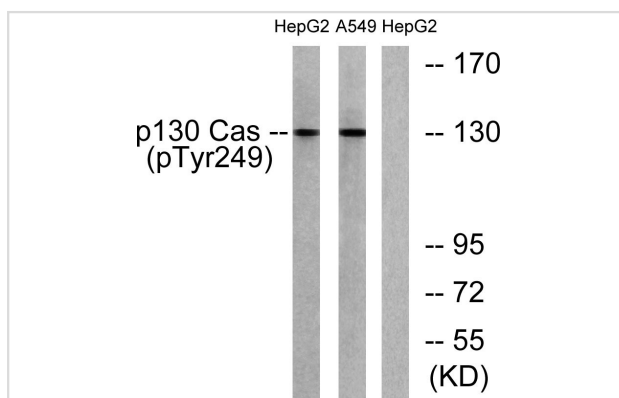
Application Details

Western Blot: 1/500 - 1/2000.

Immunohistochemistry: 1/100 - 1/300.

ELISA: 1/10000. Not yet tested in other applications.

Images



Western blot analysis of lysates from HepG2 cells treated with EGF 200ng/ml 30' and A549 cells treated with PMA 125ng/ml 30', using p130 Cas (Phospho-Tyr249) Antibody. The lane on the right is blocked with the phospho peptide.

Background

BCAR1, Cas family scaffolding protein(BCAR1) Homo sapiens BCAR1, or CAS, is an Src (MIM 190090) family kinase substrate involved in various cellular events, including migration, survival, transformation, and invasion (Sawada et al., 2006 [PubMed 17129785]).[supplied by OMIM, May 2009],

Note: This product is for in vitro research use only and is not intended for use in humans or animals.