

Duffy Polyclonal Antibody

Catalog No: #29587



Package Size: #29587-1 50ul #29587-2 100ul

Orders: order@signalwayantibody.comSupport: tech@signalwayantibody.com

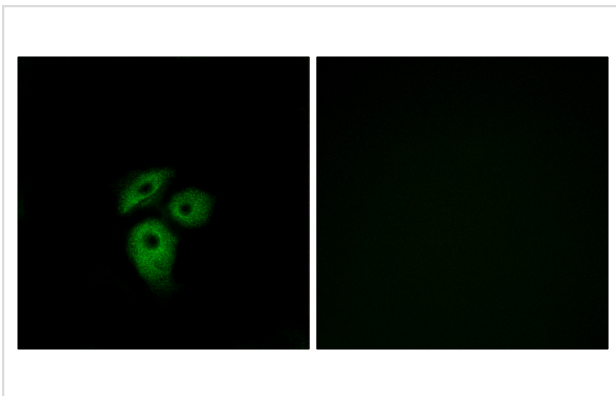
Description

Product Name	Duffy Polyclonal Antibody
Host Species	Rabbit
Clonality	Polyclonal
Applications	IF/ICC ELISA
Species Reactivity	Human Mouse Rat
Specificity	Duffy Polyclonal Antibody detects endogenous levels of Duffy protein.
Immunogen Description	The antiserum was produced against synthesized peptide derived from human DARC.
Accession No.	Swiss-Prot#: Q16570
Concentration	1mg/ml
Formulation	Liquid in PBS containing 50% glycerol, 0.5% BSA and 0.02% sodium azide.
Storage	Store at -20°C/1 year

Application Details

Immunofluorescence: 1/200 - 1/1000

Images



Immunofluorescence analysis of A549 cells, using CD234 Antibody. The picture on the right is blocked with the synthesized peptide.

Background

atypical chemokine receptor 1 (Duffy blood group)(ACKR1) Homo sapiens The protein encoded by this gene is a glycosylated membrane protein and a non-specific receptor for several chemokines. The encoded protein is the receptor for the human malarial parasites *Plasmodium vivax* and *Plasmodium knowlesi*. Polymorphisms in this gene are the basis of the Duffy blood group system. Two transcript variants encoding different isoforms have been found for this gene.

Note: This product is for in vitro research use only and is not intended for use in humans or animals.