

Caspase-5 Antibody

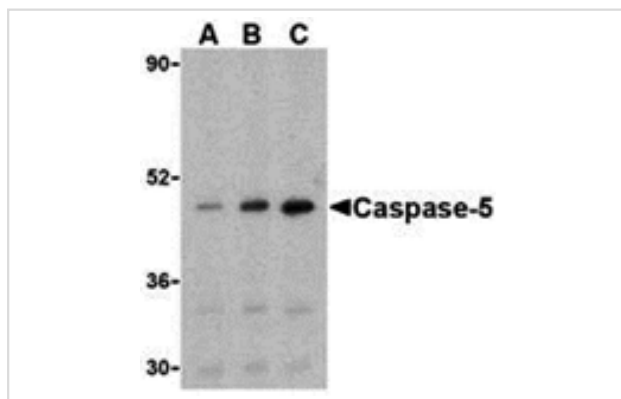
Catalog No: #24289

Orders: order@signalwayantibody.comSupport: tech@signalwayantibody.com

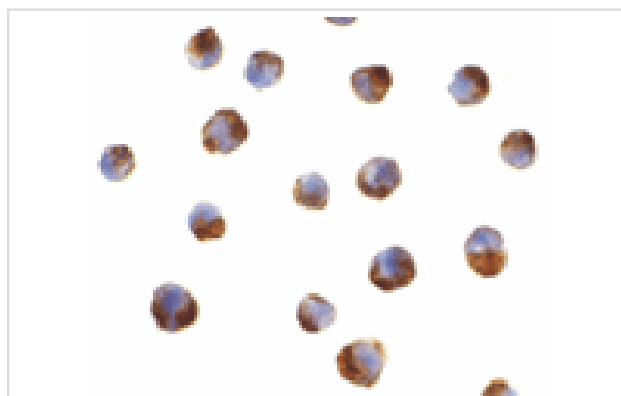
Description

Product Name	Caspase-5 Antibody
Host Species	Rabbit
Clonality	Polyclonal
Purification	Affinity chromatography purified via peptide column
Applications	ELISA WB ICC
Species Reactivity	Hu
Specificity	Depending on cell lines or tissues used, other cleavage products may be observed.
Immunogen Type	Peptide
Immunogen Description	Raised against a 14 amino acid peptide from the center of human Caspase-5.
Target Name	Caspase-5
Other Names	ICH-3, ICE rel III
Accession No.	P51878
Concentration	1mg/ml
Formulation	Supplied in PBS containing 0.02% sodium azide.
Storage	Can be stored at -20°C, stable for one year. As with all antibodies care should be taken to avoid repeated freeze thaw cycles. Antibodies should not be exposed to prolonged high temperatures.

Images



Western blot analysis of caspase-5 in Ramos cells with caspase-5 antibody at (A) 0.5, (B) 1, and (C) 2 ug/mL.



Immunocytochemistry of caspase-5 in P815 cells with caspase-5 antibody at 2 ug/mL.

Background

Caspases are a family of cysteine proteases that can be divided into the apoptotic and inflammatory caspase subfamilies. Unlike the apoptotic caspases, members of the inflammatory subfamily are generally not involved in cell death but are associated with the immune response to microbial pathogens. Members of this subfamily include caspase-1, -4, -5, and -12. Activation of these caspases results in the cleavage and activation of proinflammatory cytokines such as IL-1 β and IL-18. Caspase-5 can interact with caspase-1; both are constituents of the NALP1 inflammasome, a complex that can trigger the cleavage of pro-IL-1 β . Expression of caspase-5 can be regulated by lipopolysaccharide (LPS) and IFN-gamma.

Note: This product is for in vitro research use only and is not intended for use in humans or animals.