

# Sca1 Polyclonal Antibody FITC Conjugated

Catalog No: #C92045FITC

Orders: [order@signalwayantibody.com](mailto:order@signalwayantibody.com)Support: [tech@signalwayantibody.com](mailto:tech@signalwayantibody.com)

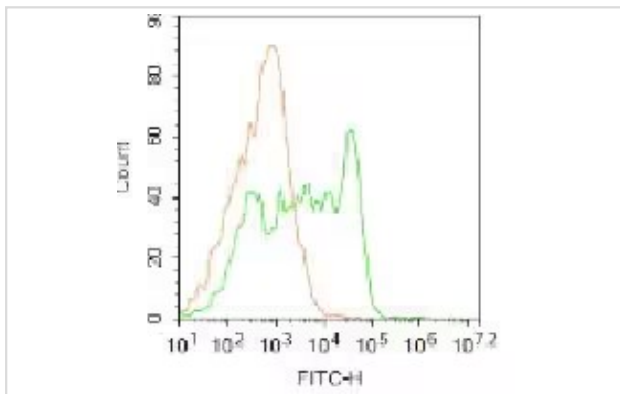
## Description

Product Name	Sca1 Polyclonal Antibody FITC Conjugated
Host Species	Rabbit
Clonality	Polyclonal
Purification	affinity purified by Protein A
Applications	Flow-Cyt IF
Species Reactivity	Mouse, Rat
Conjugates	FITC
Target Name	Sca1
Other Names	Sca1
Accession No.	Uniprot:P05533Gene ID:110454
Calculated MW	9
Formulation	0.01M TBS(pH7.4) with 1% BSA, 0.03% Proclin300 and 50% Glycerol.
Storage	Shipped at 4°C. Store at -20°C for one year. Avoid repeated freeze/thaw cycles.

## Application Details

Flow-Cyt=1ug/Test?IF=1:50-200

## Images



Blank control: Mouse kidney.

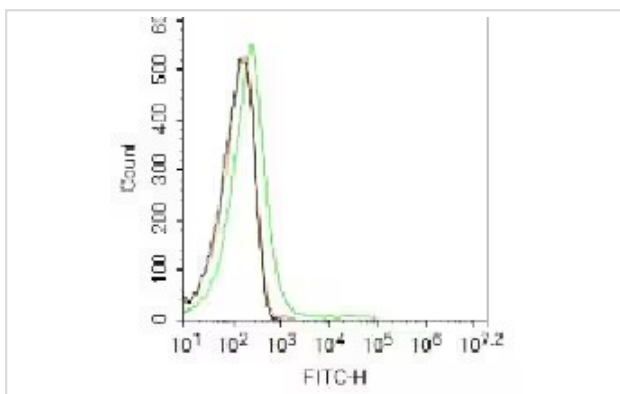
Primary Antibody (green line): Rabbit Anti-Sca1/FITC

Conjugated antibody Dilution: 0.2 $\times$ 10<sup>6</sup> cells;

Isotype Control Antibody (orange line): Rabbit IgG-FITC .

Protocol

The cells were fixed with 4% PFA (10min at room temperature) and then permeabilized with 0.1% PBST for 20 min at -20°C. The cells were then incubated in 5% BSA to block non-specific protein-protein interactions for 30 min at room temperature. The cells were stained with Primary Antibody for 30 min at room temperature. Acquisition of 20,000 events was performed.



Blank control: Mouse thymus.

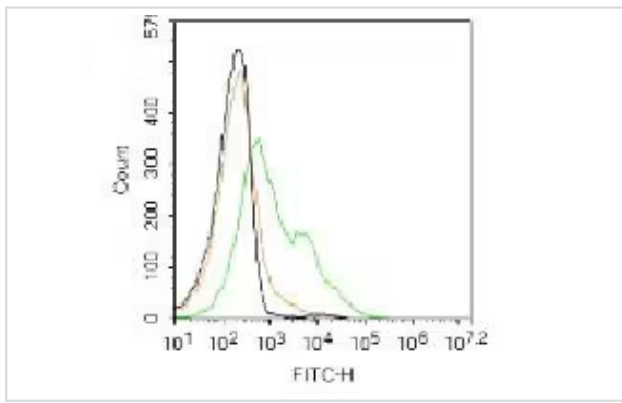
Primary Antibody (green line): Rabbit Anti-Sca1 antibody (FITC)

Dilution: 2 $\times$ 10<sup>6</sup> cells;

Isotype Control Antibody (orange line): Rabbit IgG .

Protocol

The cells were incubated in 5% BSA to block non-specific protein-protein interactions for 30 min at room temperature. Cells stained with Primary Antibody for 30 min at room temperature. Acquisition of 20,000 events was performed.



Blank control:Rat spleen.

Primary Antibody (green line): Rabbit Anti-Sca1 antibody (FITC)

Dilution: 2 $\times$ 10<sup>6</sup> /10<sup>6</sup> cells;

Isotype Control Antibody (orange line): Rabbit IgG .

Protocol

The cells were incubated in 5%BSA to block non-specific protein-protein interactions for 30 min at room temperature

.Cells stained with Primary Antibody for 30 min at room

temperature.Acquisition of 20,000 events was performed.

---

Note: This product is for in vitro research use only and is not intended for use in humans or animals.