

Tau Rabbit mAb

Catalog No: #52080

Package Size: #52080-1 50ul #52080-2 100ul

Orders: order@signalwayantibody.comSupport: tech@signalwayantibody.com

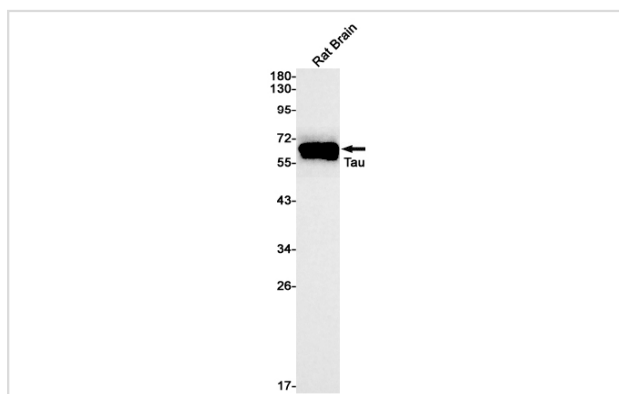
Description

Product Name	Tau Rabbit mAb
Host Species	Recombinant Rabbit
Clonality	Monoclonal antibody
Clone No.	S09-5E2
Isotype	Rabbit IgG
Purification	Affinity Purified
Applications	WB
Species Reactivity	Human,Mouse,Rat
Immunogen Description	A synthetic peptide of human Tau
Conjugates	Unconjugated
Modification	Unmodification
Other Names	TAU; MSTD; PPND; DDPAC; MAPTL; MTBT1; MTBT2; FTDP-17; PPP1R103
Accession No.	Swiss-Prot:P10636GeneID:4137
Calculated MW	Calculated MW: 79 kDa; Observed MW: 50-80 kDa
Formulation	50nM Tris-Glycine(pH 7.4), 0.15M NaCl, 40% Glycerol, 0.01% Sodium azide and 0.05% BSA
Storage	Store at 4°C short term. Aliquot and store at -20°C long term. Avoid freeze/thaw cycles.

Application Details

WB: 1/1000;

Images



Western blot detection of Tau in Rat Brain cell using Tau Rabbit mAb(1:1000 diluted). Predicted band size:79kDa.Observed band size:50-80kDa.

Background

Promotes microtubule assembly and stability, and might be involved in the establishment and maintenance of neuronal polarity

The C-terminus binds axonal microtubules while the N-terminus binds neural plasma membrane components, suggesting that tau functions as a linker protein between both

Axonal polarity is predetermined by TAU/MAPT localization (in the neuronal cell) in the domain of the cell body defined by the centrosome. The short isoforms allow plasticity of the cytoskeleton whereas the longer isoforms may preferentially play a role in its stabilization.

Note: This product is for in vitro research use only and is not intended for use in humans or animals.