

CD32 Rabbit mAb

Catalog No: #52203



Package Size: #52203-1 50ul #52203-2 100ul

Orders: order@signalwayantibody.com

Support: tech@signalwayantibody.com

Description

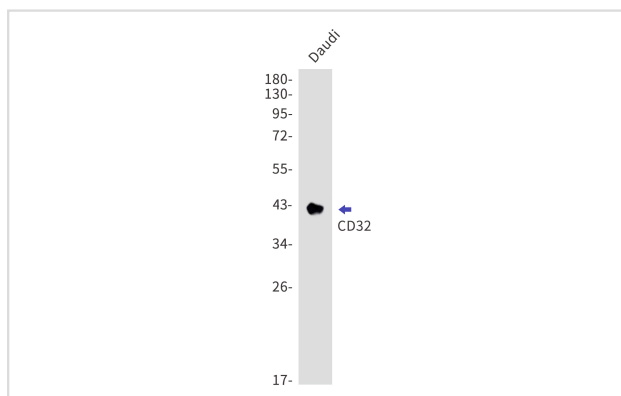
Product Name	CD32 Rabbit mAb
Clone No.	S09-5D1
Isotype	Rabbit IgG
Purification	Affinity Purified
Applications	WB,IHC-P
Species Reactivity	Human
Immunogen Description	A synthetic peptide of human CD32
Conjugates	Unconjugated
Modification	Unmodification
Other Names	CD32; FCG2; FcGR; CD32A; CDw32; FCGR2; IGFR2; FCGR2A1
Accession No.	Swiss-Prot:P12318GeneID:2212
Calculated MW	Calculated MW: 35 kDa; Observed MW: 35-42 kDa
Formulation	50nM Tris-Glycine(pH 7.4), 0.15M NaCl, 40% Glycerol, 0.01% Sodium azide and 0.05% BSA
Storage	Store at 4°C short term. Aliquot and store at -20°C long term. Avoid freeze/thaw cycles.

Application Details

WB 1:500-1:1000

IHC 1:50-1:100

Images



Western blot detection of CD32 in Daudi lysates using CD32 antibody. Predicted band size: 35kDa. Observed band size: 35-42kDa.

Background

Swiss-Prot Acc.P12318. Binds to the Fc region of immunoglobulins gamma. Low affinity receptor. By binding to IgG it initiates cellular responses against pathogens and soluble antigens. Promotes phagocytosis of opsonized antigens.

Note: This product is for in vitro research use only and is not intended for use in humans or animals.