

DHX8 Rabbit mAb

Catalog No: #52253

Package Size: #52253-1 50ul #52253-2 100ul

Orders: order@signalwayantibody.comSupport: tech@signalwayantibody.com

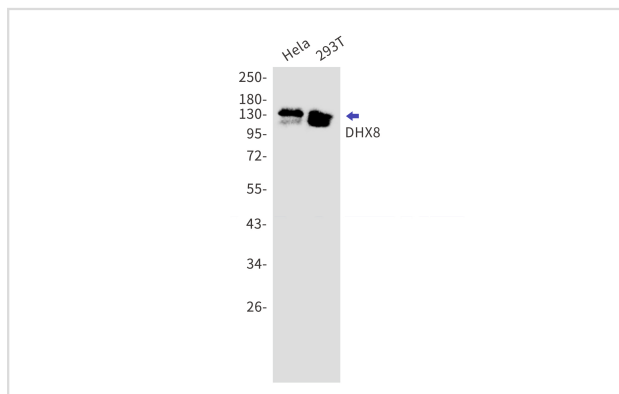
Description

Product Name	DHX8 Rabbit mAb
Host Species	Recombinant Rabbit
Clonality	Monoclonal antibody
Clone No.	S04-117
Isotype	Rabbit IgG
Purification	Affinity Purified
Applications	WB
Species Reactivity	Human
Immunogen Description	A synthetic peptide of human DHX8
Conjugates	Unconjugated
Modification	Unmodification
Other Names	DDX8; Dhr2; HRH1; PRP22; PRPF22
Accession No.	Swiss-Prot:Q14562GeneID:1659
Calculated MW	Calculated MW: 139 kDa; Observed MW: 139 kDa
Formulation	50nM Tris-Glycine(pH 7.4), 0.15M NaCl, 40% Glycerol, 0.01% Sodium azide and 0.05% BSA
Storage	Store at 4°C short term. Aliquot and store at -20°C long term. Avoid freeze/thaw cycles.

Application Details

WB: 1/1000-1/5000;

Images



Western blot detection of DHX8 in HeLa,293T cell lysates using DHX8 Rabbit mAb(1:1000 diluted).Predicted band size:139kDa.Observed band size:139kDa.

Background

Swiss-Prot Acc.Q14562.Facilitates nuclear export of spliced mRNA by releasing the RNA from the spliceosome.

Note: This product is for in vitro research use only and is not intended for use in humans or animals.