

## DOCK8 Rabbit mAb

Catalog No: #52258

Package Size: #52258-1 50ul #52258-2 100ul

Orders: order@signalwayantibody.com

Support: tech@signalwayantibody.com

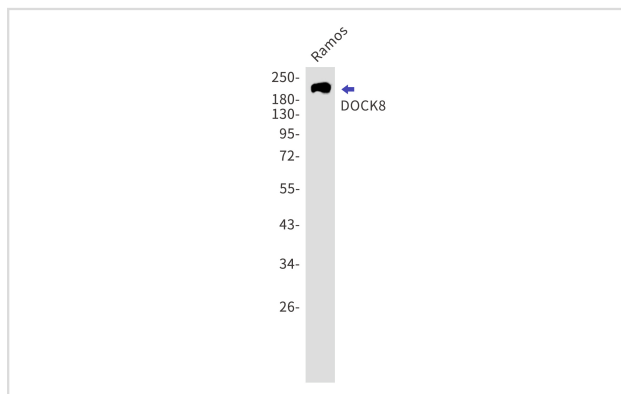
## Description

Product Name	DOCK8 Rabbit mAb
Host Species	Recombinant Rabbit
Clonality	Monoclonal antibody
Clone No.	S04-3E6
Isotype	Rabbit IgG
Purification	Affinity Purified
Applications	WB
Species Reactivity	Human
Immunogen Description	Recombinant protein of human DOCK8
Conjugates	Unconjugated
Modification	Unmodification
Other Names	MRD2; ZIR8; HEL-205
Accession No.	Swiss-Prot:Q8NF50GeneID:81704
Calculated MW	Calculated MW: 239 kDa; Observed MW: 239 kDa
Formulation	50nM Tris-Glycine(pH 7.4), 0.15M NaCl, 40% Glycerol, 0.01% Sodium azide and 0.05% BSA
Storage	Store at 4°C short term. Aliquot and store at -20°C long term. Avoid freeze/thaw cycles.

## Application Details

WB: 1/1000

## Images



Western blot detection of DOCK8 in Ramos lysates using DOCK8 antibody. Predicted band size: 239kDa. Observed band size: 239kDa.

## Background

Swiss-Prot Acc.Q8NF50. Guanine nucleotide exchange factor (GEF) which specifically activates small GTPase CDC42 by exchanging bound GDP for free GTP (PubMed:28028151, PubMed:22461490). During immune responses, required for interstitial dendritic cell (DC) migration by locally activating CDC42 at the leading edge membrane of DC. Required for CD4+ T-cell migration in response to chemokine stimulation by promoting CDC42

activation at T cell leading edge membrane (PubMed:28028151). Is involved in NK cell cytotoxicity by controlling polarization of microtubule-organizing center (MTOC), and possibly regulating CCDC88B-mediated lytic granule transport to MTOC during cell killing (PubMed:25762780).

---

Note: This product is for in vitro research use only and is not intended for use in humans or animals.