

## MTX3 Rabbit mAb

Catalog No: #52439

Package Size: #52439-1 50ul #52439-2 100ul

Orders: [order@signalwayantibody.com](mailto:order@signalwayantibody.com)Support: [tech@signalwayantibody.com](mailto:tech@signalwayantibody.com)

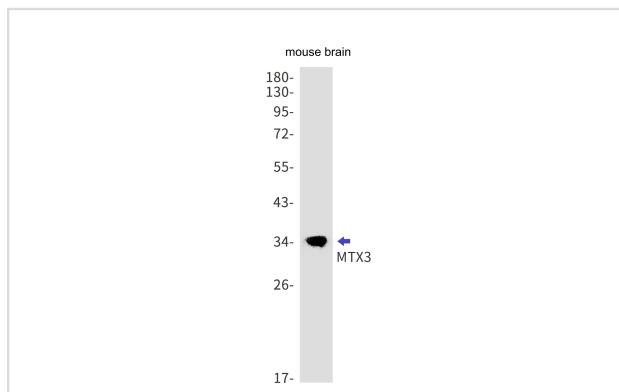
## Description

Product Name	MTX3 Rabbit mAb
Host Species	Recombinant Rabbit
Clonality	Monoclonal antibody
Clone No.	S08-2K4
Isotype	Rabbit IgG
Purification	Affinity Purified
Applications	WB
Species Reactivity	Human,Mouse,Rat
Immunogen Description	A synthetic peptide of human MTX3
Conjugates	Unconjugated
Modification	Unmodification
Other Names	Metaxin-3
Accession No.	Swiss-Prot:Q5HYI7GeneID:345778
Calculated MW	Calculated MW: 35 kDa; Observed MW: 35 kDa
Formulation	50nM Tris-Glycine(pH 7.4), 0.15M NaCl, 40% Glycerol, 0.01% Sodium azide and 0.05% BSA
Storage	Store at 4°C short term. Aliquot and store at -20°C long term. Avoid freeze/thaw cycles.

## Application Details

WB: 1/1000-1/5000

## Images



Western blot detection of MTX3 in mouse brain cell lysates using MTX3 Rabbit mAb(1:1000 diluted). Predicted band size:35kDa.Observed band size:35kDa.

## Background

Swiss-Prot Acc.Q5HYI7.Could function in transport of proteins into the mitochondrion.

---

Note: This product is for in vitro research use only and is not intended for use in humans or animals.