

## Nesprin3 Rabbit mAb

Catalog No: #52457

Package Size: #52457-1 50ul #52457-2 100ul

Orders: order@signalwayantibody.com

Support: tech@signalwayantibody.com

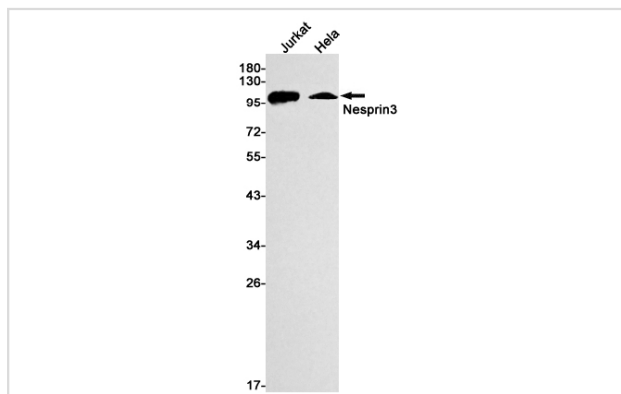
## Description

Product Name	Nesprin3 Rabbit mAb
Host Species	Recombinant Rabbit
Clonality	Monoclonal antibody
Clone No.	S05-1B8
Isotype	Rabbit IgG
Purification	Affinity Purified
Applications	WB
Species Reactivity	Human
Immunogen Description	Recombinant protein of human Nesprin3
Conjugates	Unconjugated
Modification	Unmodification
Other Names	KASH3; NET53; Nesp3; C14orf49; C14orf139; LINC00341; NCRNA00341
Accession No.	Swiss-Prot:Q6ZMZ3GeneID:161176
Calculated MW	Calculated MW: 112 kDa; Observed MW: 112 kDa
Formulation	50nM Tris-Glycine(pH 7.4), 0.15M NaCl, 40% Glycerol, 0.01% Sodium azide and 0.05% BSA
Storage	Store at 4°C short term. Aliquot and store at -20°C long term. Avoid freeze/thaw cycles.

## Application Details

WB: 1/1000-1/2000

## Images



Western blot detection of Nesprin3 in Jurkat, HeLa cell lysates using Nesprin3 Rabbit mAb(1:1000 diluted). Predicted band size: 112kDa. Observed band size: 112kDa.

## Background

Swiss-Prot Acc.Q6ZMZ3. As a component of the LINC (Linker of Nucleoskeleton and Cytoskeleton) complex involved in the connection between the nuclear lamina and the cytoskeleton. The nucleocytoplasmic interactions established by the LINC complex play an important role in the transmission of mechanical forces across the nuclear envelope and in nuclear movement and positioning. Probable anchoring protein which tethers the nucleus to the

cytoskeleton by binding PLEC which can associate with the intermediate filament system. Plays a role in the regulation of aortic epithelial cell morphology, and is required for flow-induced centrosome polarization and directional migration in aortic endothelial cells.

---

Note: This product is for in vitro research use only and is not intended for use in humans or animals.