

Secretory Phospholipase A2 Rabbit mAb

Catalog No: #52568



Package Size: #52568-1 50ul #52568-2 100ul

Orders: order@signalwayantibody.comSupport: tech@signalwayantibody.com

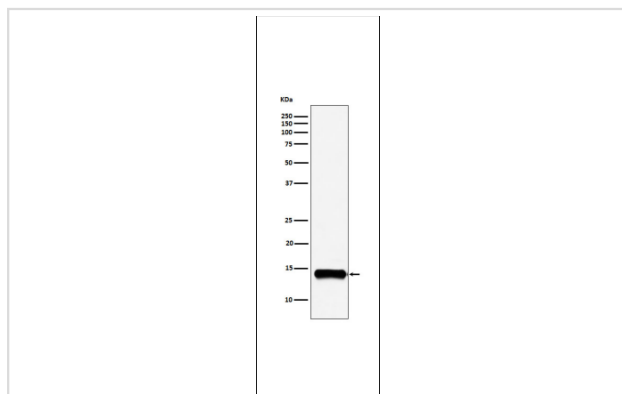
Description

| | |
|-----------------------|---|
| Product Name | Secretory Phospholipase A2 Rabbit mAb |
| Clone No. | S09-4F9 |
| Isotype | Rabbit IgG |
| Purification | Affinity-chromatography |
| Applications | WB |
| Species Reactivity | Human,Mouse,Rat |
| Immunogen Description | A synthesized peptide derived from human PLA2G2A |
| Conjugates | Unconjugated |
| Modification | Unmodification |
| Other Names | MOM1; PLA2; PLA2B; PLA2L; PLA2S; PLAS1; sPLA2 |
| Accession No. | Swiss-Prot:P14555GeneID:5320 |
| Calculated MW | 14kDa |
| Concentration | 0.8 mg/ml |
| Formulation | Rabbit IgG in 10mM phosphate buffered saline , pH 7.4, 150mM sodium chloride, 0.05% BSA, 0.02% sodium azide and 50% glycerol. |
| Storage | Store at 4°C short term. Aliquot and store at -20°C long term. Avoid freeze/thaw cycles. |

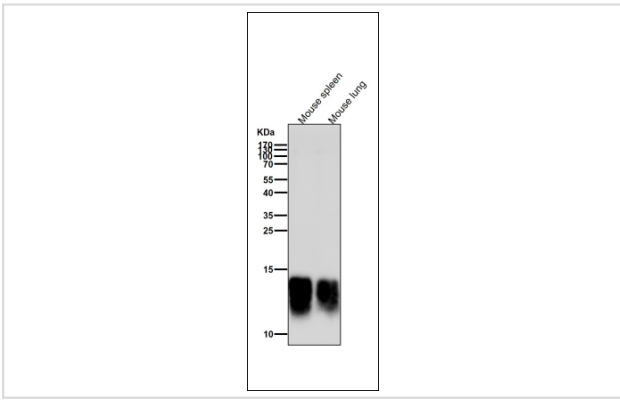
Application Details

WB 1:1000-1:2000

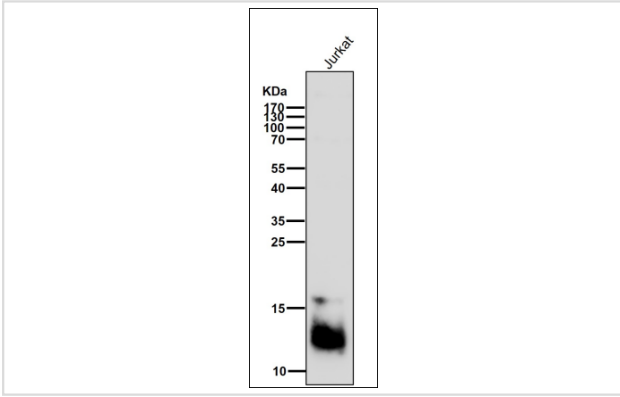
Images



Western blot analysis of PLA2G2A expression in A549 cell lysate.



All lanes use the Antibody at 1:5K dilution for 1 hour at room temperature.



All lanes use the Antibody at 1:5K dilution for 1 hour at room temperature.

Background

Thought to participate in the regulation of the phospholipid metabolism in biomembranes including eicosanoid biosynthesis. Catalyzes the calcium-dependent hydrolysis of the 2-acyl groups in 3-sn-phosphoglycerides.

Note: This product is for in vitro research use only and is not intended for use in humans or animals.