

# Transmembrane Protein 192 Rabbit mAb

Catalog No: #52620

Package Size: #52620-1 50ul #52620-2 100ul

Orders: [order@signalwayantibody.com](mailto:order@signalwayantibody.com)Support: [tech@signalwayantibody.com](mailto:tech@signalwayantibody.com)

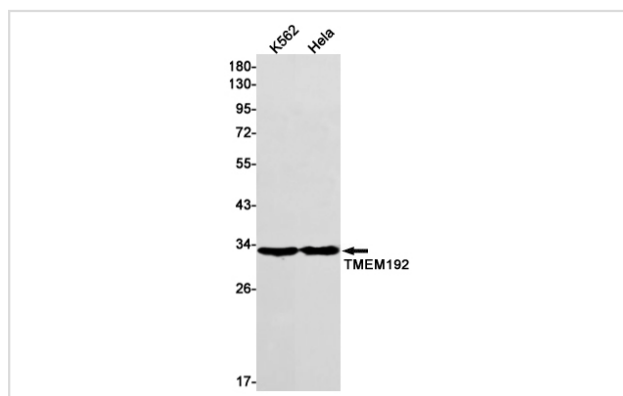
## Description

Product Name	Transmembrane Protein 192 Rabbit mAb
Host Species	Recombinant Rabbit
Clonality	Monoclonal antibody
Clone No.	S02-3F9
Isotype	Rabbit IgG
Purification	Affinity Purified
Applications	WB
Species Reactivity	Human,Mouse,Rat
Immunogen Description	Recombinant protein of human TMEM192
Conjugates	Unconjugated
Modification	Unmodification
Other Names	Transmembrane protein 192
Accession No.	Swiss-Prot:Q8IY95GeneID:201931
Calculated MW	Calculated MW: 31 kDa; Observed MW: 31 kDa
Formulation	50nM Tris-Glycine(pH 7.4), 0.15M NaCl, 40% Glycerol, 0.01% Sodium azide and 0.05% BSA
Storage	Store at 4°C short term. Aliquot and store at -20°C long term. Avoid freeze/thaw cycles.

## Application Details

WB: 1/1000

## Images



Western blot detection of TMEM192 in K562, HeLa cell lysates using TMEM192 Rabbit mAb (1:1000 diluted). Predicted band size: 31 kDa. Observed band size: 31 kDa.

## Background

Swiss-Prot Acc. Q8IY95. Transmembrane protein 192

---

Note: This product is for in vitro research use only and is not intended for use in humans or animals.