

Transmembrane Protein 43 Rabbit mAb

Catalog No: #52622



Package Size: #52622-1 50ul #52622-2 100ul

Orders: order@signalwayantibody.com
Support: tech@signalwayantibody.com

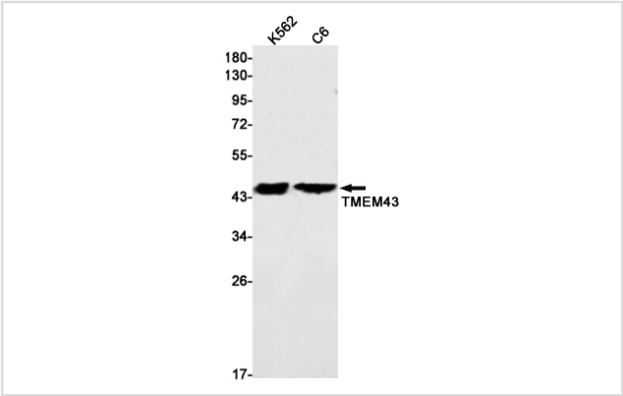
Description

Product Name	Transmembrane Protein 43 Rabbit mAb
Host Species	Recombinant Rabbit
Clonality	Monoclonal antibody
Clone No.	S07-9D4
Isotype	Rabbit IgG
Purification	Affinity Purified
Applications	WB IHC
Species Reactivity	Human,Mouse,Rat
Immunogen Description	A synthetic peptide of human TMEM43
Conjugates	Unconjugated
Modification	Unmodification
Other Names	LUMA; ARVC5; ARVD5; EDMD7
Accession No.	Swiss-Prot:Q9BTV4GeneID:79188
Calculated MW	Calculated MW: 45 kDa; Observed MW: 45 kDa
Formulation	50nM Tris-Glycine(pH 7.4), 0.15M NaCl, 40% Glycerol, 0.01% Sodium azide and 0.05% BSA
Storage	Store at 4°C short term. Aliquot and store at -20°C long term. Avoid freeze/thaw cycles.

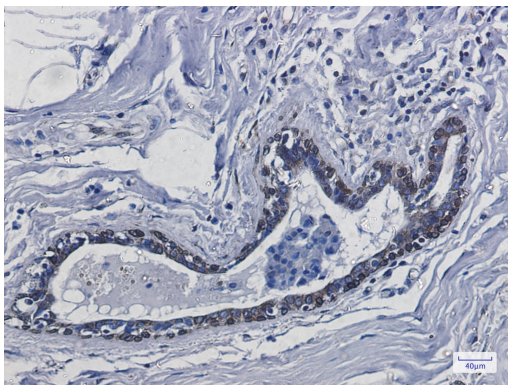
Application Details

WB: 1/1000-1/5000; IHC: 1/50

Images



Western blot detection of TMEM43 in K562,C6 cell lysates using TMEM43 Rabbit mAb(1:1000 diluted).Predicted band size:45kDa.Observed band size:45kDa.



Immunohistochemistry of TMEM43 in paraffin-embedded Human breast cancer tissue using TMEM43 Rabbit mAb at dilution 1/50

Background

Swiss-Prot Acc.Q9BTV4. May have an important role in maintaining nuclear envelope structure by organizing protein complexes at the inner nuclear membrane. Required for retaining emerin at the inner nuclear membrane .

Note: This product is for in vitro research use only and is not intended for use in humans or animals.