

14 3 3 alpha/beta Rabbit mAb

Catalog No: #52706



Package Size: #52706-1 50ul #52706-2 100ul

Orders: order@signalwayantibody.com

Support: tech@signalwayantibody.com

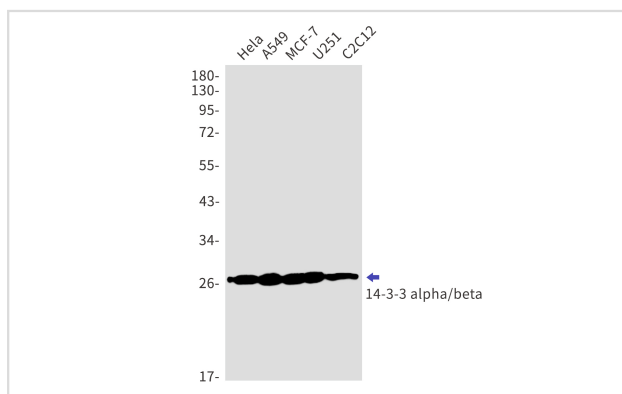
Description

Product Name	14 3 3 alpha/beta Rabbit mAb
Host Species	Recombinant Rabbit
Clonality	Monoclonal antibody
Clone No.	S08-4A7
Isotype	IgG
Purification	Affinity Purified
Applications	WB IHC
Species Reactivity	Human,Mouse,Rat
Immunogen Description	A synthetic peptide of human 14-3-3 alpha/beta
Conjugates	Unconjugated
Modification	Unmodification
Other Names	HS1; GW128; YWHAA; KCIP-1; HEL-S-1
Accession No.	Swiss-Prot:P31946GenelD:7529
Calculated MW	Calculated MW:28 kDa,Observed MW:28 kDa
Formulation	50nM Tris-Glycine(pH 7.4), 0.15M NaCl, 40% Glycerol, 0.01% Sodium azide and 0.05% BSA
Storage	Store at 4°C short term. Aliquot and store at -20°C long term. Avoid freeze/thaw cycles.

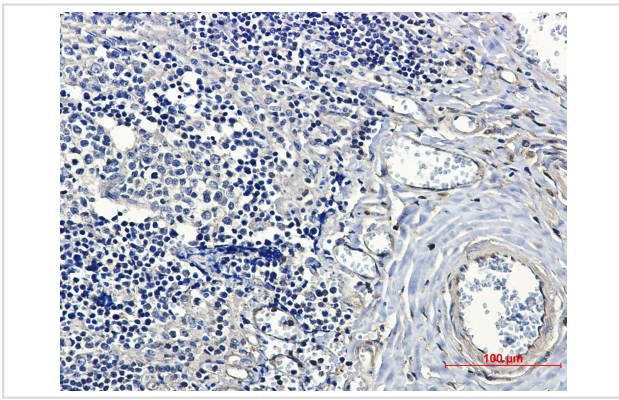
Application Details

WB: 1/1000 IHC: 1/20

Images



Western blot detection of 14-3-3 alpha/beta in HeLa,A549,MCF-7,U251,C2C12 cell lysates using 14-3-3 alpha/beta Rabbit mAb(1:1000 diluted).Predicted band size:28kDa.Observed band size:28kDa.



Immunohistochemical of 14-3-3 alpha/beta in Human tonsil tissue using 14-3-3 alpha/beta antibody at dilution 1/50

Background

This gene encodes a protein belonging to the 14-3-3 family of proteins, members of which mediate signal transduction by binding to phosphoserine-containing proteins. This highly conserved protein family is found in both plants and mammals. The encoded protein has been shown to interact with RAF1 and CDC25 phosphatases, suggesting that it may play a role in linking mitogenic signaling and the cell cycle machinery. Two transcript variants, which encode the same protein, have been identified for this gene. [provided by RefSeq, Jul 2008]

Note: This product is for in vitro research use only and is not intended for use in humans or animals.