

14 3 3 gamma Rabbit mAb

Catalog No: #52707



Package Size: #52707-1 50ul #52707-2 100ul

Orders: order@signalwayantibody.com

Support: tech@signalwayantibody.com

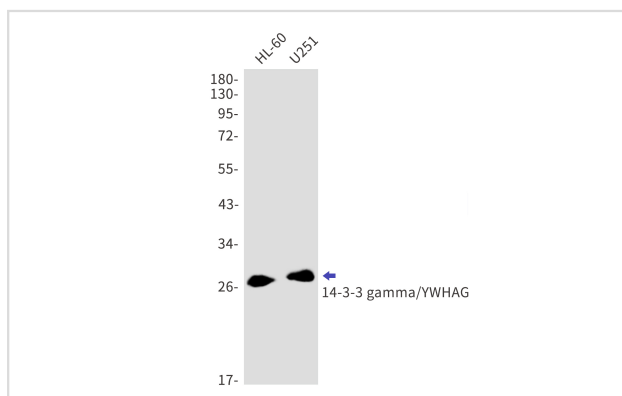
Description

Product Name	14 3 3 gamma Rabbit mAb
Host Species	Recombinant Rabbit
Clonality	Monoclonal antibody
Clone No.	S01-4C7
Isotype	IgG
Purification	Affinity Purified
Applications	WB
Species Reactivity	Human,Mouse,Rat
Immunogen Description	A synthetic peptide of human 14-3-3 gamma/YWHAG
Conjugates	Unconjugated
Modification	Unmodification
Other Names	EIEE56; PPP1R170; 14-3-3GAMMA
Accession No.	Swiss-Prot:P61981GeneID:7532
Calculated MW	Calculated MW:28 kDa,Observed MW:28 kDa
Formulation	50nM Tris-Glycine(pH 7.4), 0.15M NaCl, 40% Glycerol, 0.01% Sodium azide and 0.05% BSA
Storage	Store at 4°C short term. Aliquot and store at -20°C long term. Avoid freeze/thaw cycles.

Application Details

WB: 1/1000

Images



Western blot detection of 14-3-3 gamma/YWHAG in HL-60,U251 cell lysates using 14-3-3 gamma/YWHAG Rabbit mAb(1:1000 diluted).Predicted band size:28kDa.Observed band size:28kDa.

Background

Swiss-Prot Acc.P61981.Induce target protein conformational changes that modify target protein function. Distinct temporal and spatial expression patterns of 14-3-3 isoforms have been observed in development and in acute response to extracellular signals and drugs, suggesting that 14-3-3 isoforms may perform different functions despite their sequence similarities.

Note: This product is for in vitro research use only and is not intended for use in humans or animals.