

AMSH Rabbit mAb

Catalog No: #52712

Package Size: #52712-1 50ul #52712-2 100ul

Orders: order@signalwayantibody.comSupport: tech@signalwayantibody.com

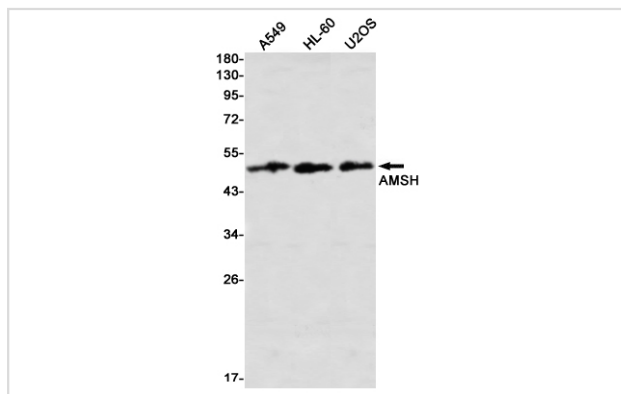
Description

Product Name	AMSH Rabbit mAb
Host Species	Recombinant Rabbit
Clonality	Monoclonal antibody
Clone No.	S07-6D1
Isotype	IgG
Purification	Affinity Purified
Applications	WB
Species Reactivity	Human,Mouse,Rat
Immunogen Description	A synthetic peptide of human AMSH
Conjugates	Unconjugated
Modification	Unmodification
Other Names	AMSH; MICCAP
Accession No.	Swiss-Prot:O95630GeneID:10617
Calculated MW	Calculated MW:48 kDa,Observed MW:48 kDa
Formulation	50nM Tris-Glycine(pH 7.4), 0.15M NaCl, 40% Glycerol, 0.01% Sodium azide and 0.05% BSA
Storage	Store at 4°C short term. Aliquot and store at -20°C long term. Avoid freeze/thaw cycles.

Application Details

WB: 1/1000

Images



Western blot detection of AMSH in A549,HL-60,U2OS using AMSH Rabbit mAb(1:1000 diluted)

Background

Zinc metalloprotease that specifically cleaves 'Lys-63'-linked polyubiquitin chains. Does not cleave 'Lys-48'-linked polyubiquitin chains (By similarity).

Plays a role in signal transduction for cell growth and MYC induction mediated by IL-2 and GM-CSF. Potentiates BMP (bone morphogenetic protein)

signaling by antagonizing the inhibitory action of SMAD6 and SMAD7. Has a key role in regulation of cell surface receptor-mediated endocytosis and ubiquitin-dependent sorting of receptors to lysosomes. Endosomal localization of STAMPB is required for efficient EGFR degradation but not for its internalization (By similarity).

Involved in the negative regulation of PI3K-AKT-mTOR and RAS-MAP signaling pathways.

Note: This product is for in vitro research use only and is not intended for use in humans or animals.