

## APLP2 Rabbit mAb

Catalog No: #52714

Package Size: #52714-1 50ul #52714-2 100ul

Orders: order@signalwayantibody.com

Support: tech@signalwayantibody.com

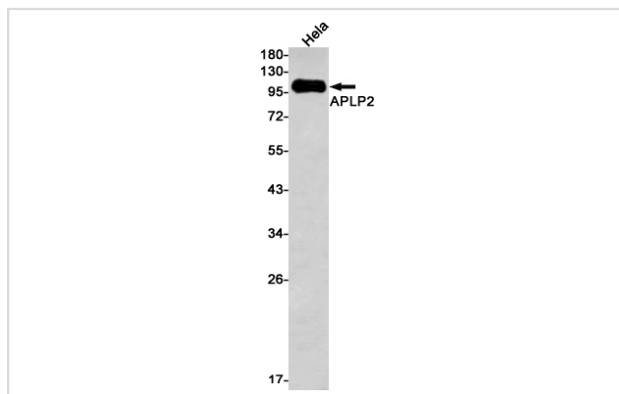
## Description

Product Name	APLP2 Rabbit mAb
Host Species	Recombinant Rabbit
Clonality	Monoclonal antibody
Clone No.	S06-817
Isotype	IgG
Purification	Affinity Purified
Applications	WB
Species Reactivity	Human,Mouse,Rat
Immunogen Description	A synthetic peptide of human APLP2
Conjugates	Unconjugated
Modification	Unmodification
Other Names	APPH; APPL2; CDEBP; APLP-2
Accession No.	Swiss-Prot:Q06481GeneID:334
Calculated MW	Calculated MW:87 kDa,Observed MW:115 kDa
Formulation	50nM Tris-Glycine(pH 7.4), 0.15M NaCl, 40% Glycerol, 0.01% Sodium azide and 0.05% BSA
Storage	Store at 4°C short term. Aliquot and store at -20°C long term. Avoid freeze/thaw cycles.

## Application Details

WB: 1/2000-1/10000

## Images



Western blot detection of APLP2 in HeLa cell lysates using APLP2 Rabbit mAb(1:1000 diluted).Predicted band size:87kDa.Observed band size:87kDa.

## Background

May play a role in the regulation of hemostasis. The soluble form may have inhibitory properties towards coagulation factors. May interact with cellular G-protein signaling pathways. May bind to the DNA 5'-GTCACATG-3'(CDEI box). Inhibits trypsin, chymotrypsin, plasmin, factor XIA and plasma and glandular kallikrein. Modulates the Cu/Zn nitric oxide-catalyzed autodegradation of GPC1 heparan sulfate side chains in fibroblasts (By similarity).

---

Note: This product is for in vitro research use only and is not intended for use in humans or animals.