

Bcr Rabbit mAb

Catalog No: #52722



Package Size: #52722-1 50ul #52722-2 100ul

Orders: order@signalwayantibody.com

Support: tech@signalwayantibody.com

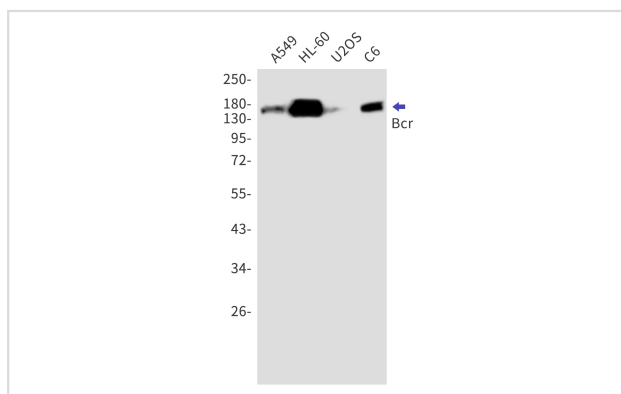
Description

Product Name	Bcr Rabbit mAb
Host Species	Recombinant Rabbit
Clonality	Monoclonal antibody
Clone No.	S02-610
Isotype	IgG
Purification	Affinity Purified
Applications	WB IHC
Species Reactivity	Human
Immunogen Description	A synthetic peptide of human Bcr
Conjugates	Unconjugated
Modification	Unmodification
Other Names	ALL; CML; PHL; BCR1; D22S11; D22S662
Accession No.	Swiss-Prot:P11274GenelD:613
Calculated MW	Calculated MW:143 kDa,Observed MW:160 kDa
Formulation	50nM Tris-Glycine(pH 7.4), 0.15M NaCl, 40% Glycerol, 0.01% Sodium azide and 0.05% BSA
Storage	Store at 4°C short term. Aliquot and store at -20°C long term. Avoid freeze/thaw cycles.

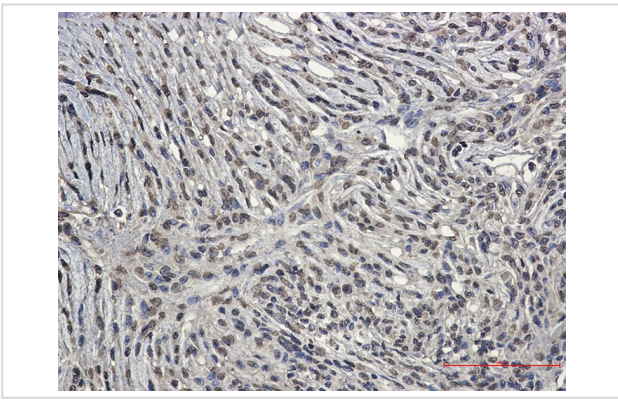
Application Details

WB: 1/2000 IHC: 1/20

Images



Western blot detection of Bcr in A549,HL-60,U2OS,C6 cell lysates using Bcr Rabbit mAb(1:1000 diluted).Predicted band size:143kDa.Observed band size:160kDa.



Immunohistochemistry of Bcr in paraffin-embedded Human Brain using Bcr Rabbit mAb at dilution 1/50

Background

A reciprocal translocation between chromosomes 22 and 9 produces the Philadelphia chromosome, which is often found in patients with chronic myelogenous leukemia. The chromosome 22 breakpoint for this translocation is located within the BCR gene. The translocation produces a fusion protein which is encoded by sequence from both BCR and ABL, the gene at the chromosome 9 breakpoint. Although the BCR-ABL fusion protein has been extensively studied, the function of the normal BCR gene product is not clear. The unregulated tyrosine kinase activity of BCR-ABL1 contributes to the immortality of leukaemic cells. The BCR protein has serine/threonine kinase activity and is a GTPase-activating protein for p21rac and other kinases. Two transcript variants encoding different isoforms have been found for this gene.[provided by RefSeq, Jan 2020]

Note: This product is for in vitro research use only and is not intended for use in humans or animals.