

Cadherin 10 Rabbit mAb

Catalog No: #52729

Package Size: #52729-1 50ul #52729-2 100ul

Orders: order@signalwayantibody.comSupport: tech@signalwayantibody.com

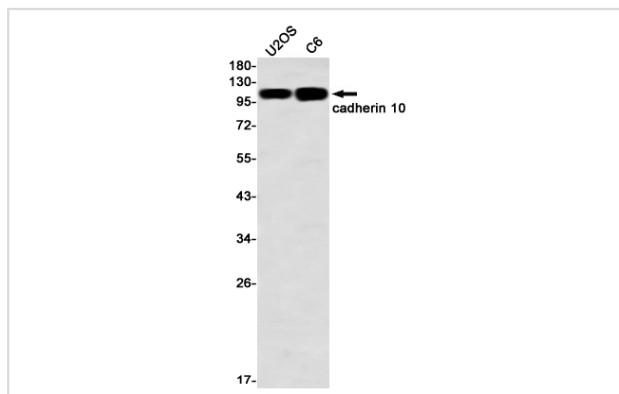
Description

Product Name	Cadherin 10 Rabbit mAb
Host Species	Recombinant Rabbit
Clonality	Monoclonal antibody
Clone No.	S07-2E2
Isotype	IgG
Purification	Affinity Purified
Applications	WB
Species Reactivity	Human,Mouse,Rat
Immunogen Description	A synthetic peptide of human cadherin 10
Conjugates	Unconjugated
Modification	Unmodification
Other Names	T2-cadherin; CDH10
Accession No.	Swiss-Prot:Q9Y6N8GeneID:1008
Calculated MW	Calculated MW:89 kDa,Observed MW:110 kDa
Formulation	50nM Tris-Glycine(pH 7.4), 0.15M NaCl, 40% Glycerol, 0.01% Sodium azide and 0.05% BSA
Storage	Store at 4°C short term. Aliquot and store at -20°C long term. Avoid freeze/thaw cycles.

Application Details

WB: 1/1000

Images



Western blot detection of cadherin 10 in U2OS,C6 using cadherin 10 Rabbit mAb(1:1000 diluted)

Background

Cadherins are calcium-dependent cell adhesion proteins. They preferentially interact with themselves in a homophilic manner in connecting cells; cadherins may thus contribute to the sorting of heterogeneous cell types.

Note: This product is for in vitro research use only and is not intended for use in humans or animals.