

CD229 Rabbit mAb

Catalog No: #52735

Package Size: #52735-1 50ul #52735-2 100ul

Orders: order@signalwayantibody.com

Support: tech@signalwayantibody.com

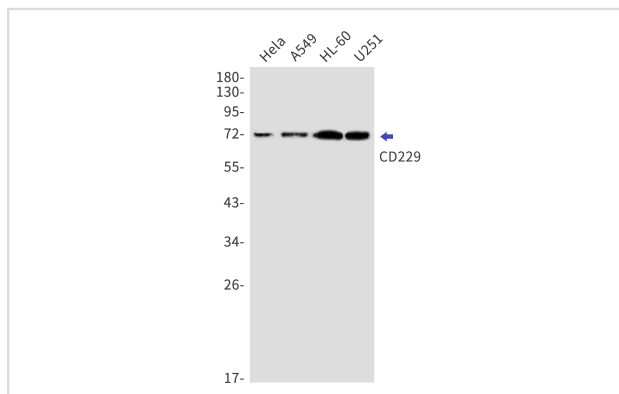
Description

| | |
|-----------------------|--|
| Product Name | CD229 Rabbit mAb |
| Host Species | Recombinant Rabbit |
| Clonality | Monoclonal antibody |
| Clone No. | S02-110 |
| Isotype | IgG |
| Purification | Affinity Purified |
| Applications | WB |
| Species Reactivity | Human,Mouse,Rat |
| Immunogen Description | Recombinant protein of human CD229 |
| Conjugates | Unconjugated |
| Modification | Unmodification |
| Other Names | hly9; mLY9; CD229; SLAMF3 |
| Accession No. | Swiss-Prot:Q9HBG7GenelD:4063 |
| Calculated MW | Calculated MW:72 kDa,Observed MW:72 kDa |
| Formulation | 50nM Tris-Glycine(pH 7.4), 0.15M NaCl, 40% Glycerol, 0.01% Sodium azide and 0.05% BSA |
| Storage | Store at 4°C short term. Aliquot and store at -20°C long term. Avoid freeze/thaw cycles. |

Application Details

WB: 1/1000

Images



Western blot detection of CD229 in HeLa,A549,HL-60,U251 cell lysates using CD229 Rabbit mAb(1:1000 diluted).Predicted band size:72kDa.Observed band size:72kDa.

Background

Self-ligand receptor of the signaling lymphocytic activation molecule (SLAM) family. SLAM receptors triggered by homo- or heterotypic cell-cell interactions are modulating the activation and differentiation of a wide variety of immune cells and thus are involved in the regulation and interconnection of both innate and adaptive immune response. Activities are controlled by presence or absence of small cytoplasmic adapter proteins,

SH2D1A/SAP and/or SH2D1B/EAT-2. May participate in adhesion reactions between T lymphocytes and accessory cells by homophilic interaction. Promotes T-cell differentiation into a helper T-cell Th17 phenotype leading to increased IL-17 secretion; the costimulatory activity requires SH2D1A (PubMed:22184727).

Promotes recruitment of RORC to the IL-17 promoter (PubMed:22989874).

May be involved in the maintenance of peripheral cell tolerance by serving as a negative regulator of the immune response. May disable autoantibody responses and inhibit IFN-gamma secretion by CD4+ T-cells. May negatively regulate the size of thymic innate CD8+ T-cells and the development of invariant natural killer T (iNKT) cells (By similarity).

Note: This product is for in vitro research use only and is not intended for use in humans or animals.