

CD26 Rabbit mAb

Catalog No: #52736

Package Size: #52736-1 50ul #52736-2 100ul

Orders: order@signalwayantibody.com

Support: tech@signalwayantibody.com

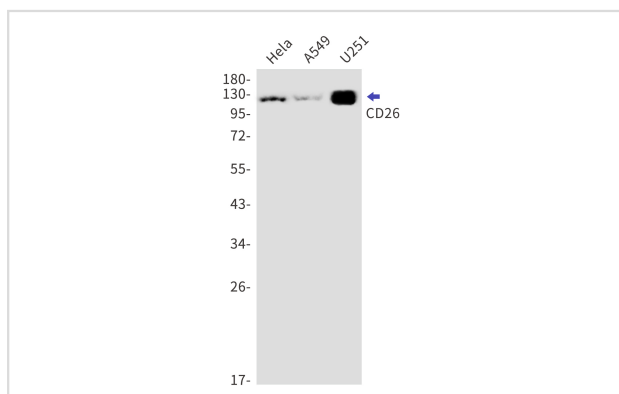
Description

Product Name	CD26 Rabbit mAb
Host Species	Recombinant Rabbit
Clonality	Monoclonal antibody
Clone No.	S04-0F6
Isotype	IgG
Purification	Affinity Purified
Applications	WB
Species Reactivity	Human,Mouse,Rat
Immunogen Description	A synthetic peptide of human CD26
Conjugates	Unconjugated
Modification	Unmodification
Other Names	CD26; ADABP; ADCP2; DPP4; TP103
Accession No.	Swiss-Prot:P27487GenelD:1803
Calculated MW	Calculated MW:88 kDa,Observed MW:120 kDa
Formulation	50nM Tris-Glycine(pH 7.4), 0.15M NaCl, 40% Glycerol, 0.01% Sodium azide and 0.05% BSA
Storage	Store at 4°C short term. Aliquot and store at -20°C long term. Avoid freeze/thaw cycles.

Application Details

WB: 1/2000-1/10000

Images



Western blot detection of CD26 in HeLa,A549,U251 cell lysates using CD26 Rabbit mAb(1:1000 diluted).Predicted band size:88kDa.Observed band size:120kDa.

Background

The DPP4 gene encodes dipeptidyl peptidase 4, which is identical to adenosine deaminase complexing protein-2, and to the T-cell activation antigen CD26. It is an intrinsic type II transmembrane glycoprotein and a serine exopeptidase that cleaves X-proline dipeptides from the N-terminus of polypeptides. Dipeptidyl peptidase 4 is highly involved in glucose and insulin metabolism, as well as in immune regulation. This protein was shown to

be a functional receptor for Middle East respiratory syndrome coronavirus (MERS-CoV), and protein modeling suggests that it may play a similar role with SARS-CoV-2, the virus responsible for COVID-19. [provided by RefSeq, Apr 2020]

Note: This product is for in vitro research use only and is not intended for use in humans or animals.