

## Ephrin Receptor B4 Rabbit mAb

Catalog No: #52754



Package Size: #52754-1 50ul #52754-2 100ul

Orders: order@signalwayantibody.com

Support: tech@signalwayantibody.com

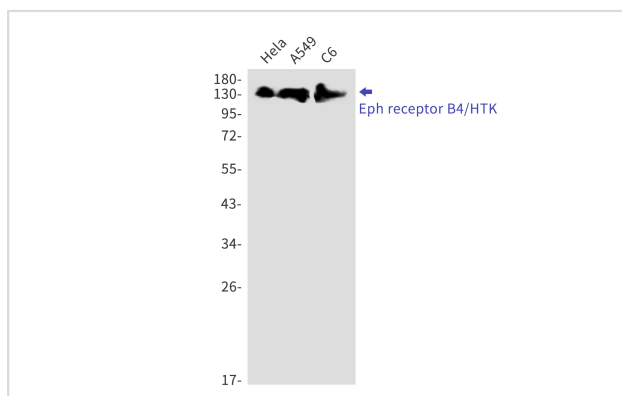
## Description

Product Name	Ephrin Receptor B4 Rabbit mAb
Host Species	Recombinant Rabbit
Clonality	Monoclonal antibody
Clone No.	S04-3B0
Isotype	IgG
Purification	Affinity Purified
Applications	WB IHC
Species Reactivity	Human,Mouse
Immunogen Description	Recombinant protein of human Eph receptor B4/HTK
Conjugates	Unconjugated
Modification	Unmodification
Other Names	HTK; MYK1; HFASD; CMAVM2; LMPHM7; TYRO11
Accession No.	Swiss-Prot:P54760GeneID:2050
Calculated MW	Calculated MW:108 kDa,Observed MW:135 kDa
Formulation	50nM Tris-Glycine(pH 7.4), 0.15M NaCl, 40% Glycerol, 0.01% Sodium azide and 0.05% BSA
Storage	Store at 4°C short term. Aliquot and store at -20°C long term. Avoid freeze/thaw cycles.

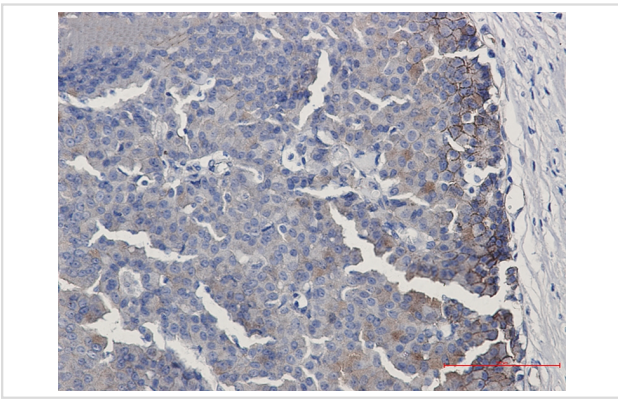
## Application Details

WB: 1/1000 IHC: 1/100

## Images



Western blot detection of Eph receptor B4/HTK in HeLa,A549,C6 cell lysates using Eph receptor B4/HTK Rabbit mAb(1:1000 diluted).Predicted band size:108kDa.Observed band size:135kDa.



Immunohistochemistry of Eph receptor B4/HTK in paraffin-embedded Human breast cancer tissue using Eph receptor B4/HTK Rabbit mAb at dilution 1/50

## Background

Receptor tyrosine kinase which binds promiscuously transmembrane ephrin-B family ligands residing on adjacent cells, leading to contact-dependent bidirectional signaling into neighboring cells. The signaling pathway downstream of the receptor is referred to as forward signaling while the signaling pathway downstream of the ephrin ligand is referred to as reverse signaling. Together with its cognate ligand/functional ligand EFNB2 it is involved in the regulation of cell adhesion and migration, and plays a central role in heart morphogenesis, angiogenesis and blood vessel remodeling and permeability. EPHB4-mediated forward signaling controls cellular repulsion and segregation from EFNB2-expressing cells.

Note: This product is for in vitro research use only and is not intended for use in humans or animals.