

## KIFAP3 Rabbit mAb

Catalog No: #52786

Package Size: #52786-1 50ul #52786-2 100ul

Orders: order@signalwayantibody.com

Support: tech@signalwayantibody.com

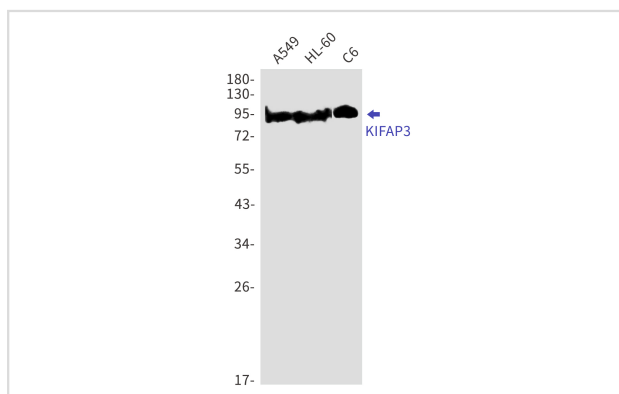
## Description

|                       |  |
|-----------------------|--|
| Product Name          | KIFAP3 Rabbit mAb  |
| Host Species          | Recombinant Rabbit   |
| Clonality             | Monoclonal antibody  |
| Clone No.             | S03-6C6  |
| Isotype               | IgG  |
| Purification          | Affinity Purified  |
| Applications          | WB IHC   |
| Species Reactivity    | Human,Mouse,Rat  |
| Immunogen Description | A synthetic peptide of human KIFAP3  |
| Conjugates            | Unconjugated   |
| Modification          | Unmodification   |
| Other Names           | FLA3; KAP3; SMAP; KAP-1; KAP-3; Smg-GDS; dJ190I16.1                                      |
| Accession No.         | Swiss-Prot:Q92845GeneID:22920  |
| Calculated MW         | Calculated MW:91 kDa,Observed MW:91 kDa  |
| Formulation           | 50nM Tris-Glycine(pH 7.4), 0.15M NaCl, 40% Glycerol, 0.01% Sodium azide and 0.05% BSA    |
| Storage               | Store at 4°C short term. Aliquot and store at -20°C long term. Avoid freeze/thaw cycles. |

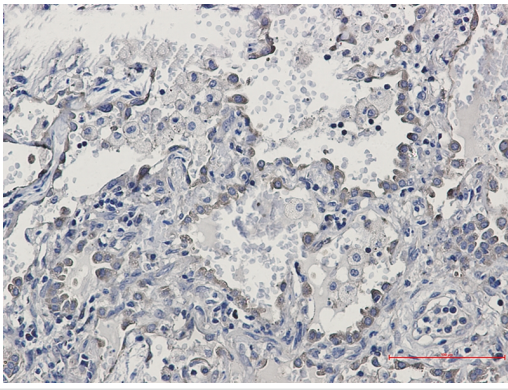
## Application Details

WB: 1/1000 IHC: 1/50

## Images



Western blot detection of KIFAP3 in A549,HL-60,C6 cell lysates using KIFAP3 Rabbit mAb(1:1000 diluted).Predicted band size:91kDa.Observed band size:91kDa.



Immunohistochemistry of KIFAP3 in paraffin-embedded Human lung cancer tissue using KIFAP3 Rabbit mAb at dilution 1/50

## Background

Involved in tethering the chromosomes to the spindle pole and in chromosome movement. Binds to the tail domain of the KIF3A/KIF3B heterodimer to form a heterotrimeric KIF3 complex and may regulate the membrane binding of this complex (By similarity)

Note: This product is for in vitro research use only and is not intended for use in humans or animals.