

## Meckelin Rabbit mAb

Catalog No: #52801



Package Size: #52801-1 50ul #52801-2 100ul

Orders: order@signalwayantibody.com

Support: tech@signalwayantibody.com

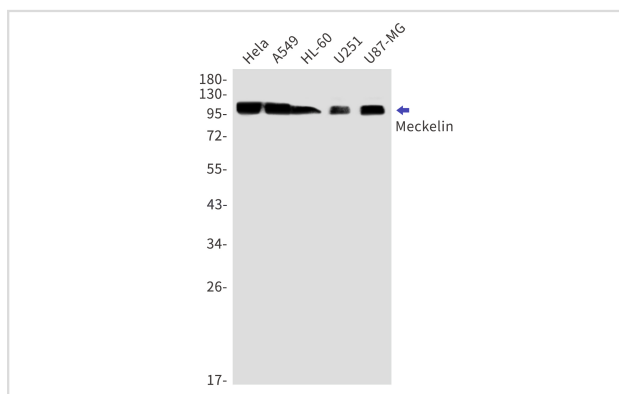
## Description

Product Name	Meckelin Rabbit mAb
Host Species	Recombinant Rabbit
Clonality	Monoclonal antibody
Clone No.	S07-2A4
Isotype	IgG
Purification	Affinity Purified
Applications	WB IF
Species Reactivity	Human,Mouse,Rat
Immunogen Description	A synthetic peptide of human Meckelin
Conjugates	Unconjugated
Modification	Unmodification
Other Names	MKS3; JBTS6; NPHP11; TNEM67; MECKELIN
Accession No.	Swiss-Prot:Q5HYA8GeneID:91147
Calculated MW	Calculated MW:112 kDa,Observed MW:112 kDa
Formulation	50nM Tris-Glycine(pH 7.4), 0.15M NaCl, 40% Glycerol, 0.01% Sodium azide and 0.05% BSA
Storage	Store at 4°C short term. Aliquot and store at -20°C long term. Avoid freeze/thaw cycles.

## Application Details

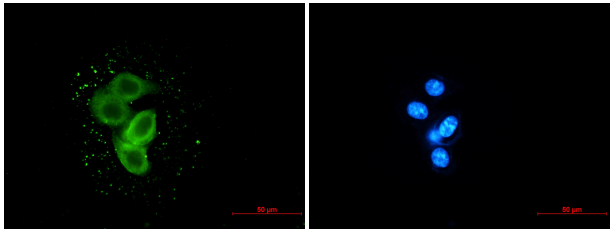
WB: 1/1000 ICC/IF: 1/200

## Images



Western blot detection of Meckelin in HeLa,A549,HL-60,U251,U87-MG cell lysates using Meckelin Rabbit mAb(1:1000 diluted).Predicted band size:112kDa.Observed band size:112kDa.

Immunocytochemistry of Meckelin (green) in MCF-7 using Meckelin antibody at dilution 1/20, and DAPI(blue)



## Background

Required for ciliary structure and function. Part of the tectonic-like complex which is required for tissue-specific ciliogenesis and may regulate ciliary membrane composition (By similarity).

Note: This product is for in vitro research use only and is not intended for use in humans or animals.