

Mitofusin 1 Rabbit mAb

Catalog No: #52805

Package Size: #52805-1 50ul #52805-2 100ul

Orders: order@signalwayantibody.comSupport: tech@signalwayantibody.com

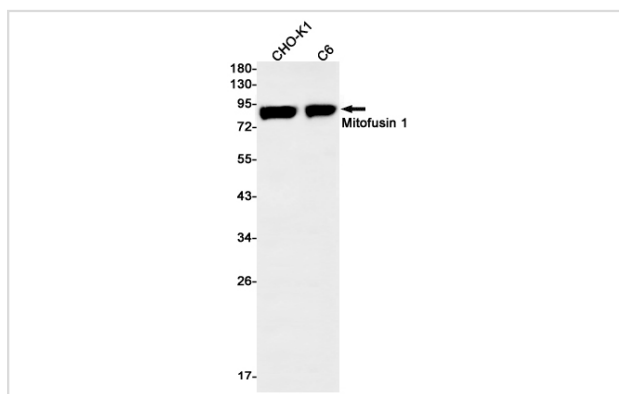
Description

Product Name	Mitofusin 1 Rabbit mAb
Host Species	Recombinant Rabbit
Clonality	Monoclonal antibody
Clone No.	S05-3A8
Isotype	IgG
Purification	Affinity Purified
Applications	WB
Species Reactivity	Mouse,Rat
Immunogen Description	A synthetic peptide of mouse Mitofusin 1
Conjugates	Unconjugated
Modification	Unmodification
Other Names	HR2; mKIAA4032; D3Ert265e; 2310002F04Rik; 6330416C07Rik
Accession No.	Swiss-Prot:Q8R4Z9GeneID:67414
Calculated MW	Calculated MW:84 kDa,Observed MW:84 kDa
Formulation	50nM Tris-Glycine(pH 7.4), 0.15M NaCl, 40% Glycerol, 0.01% Sodium azide and 0.05% BSA
Storage	Store at 4°C short term. Aliquot and store at -20°C long term. Avoid freeze/thaw cycles.

Application Details

WB: 1/1000

Images



Western blot detection of Mitofusin 1 in CHO-K1,C6 cell lysates using Mitofusin 1 Rabbit mAb(1:1000 diluted).Predicted band size:84kDa.Observed band size:84kDa.

Background

Mitochondrial outer membrane GTPase that mediates mitochondrial clustering and fusion

Note: This product is for in vitro research use only and is not intended for use in humans or animals.