

MLLT6 Rabbit mAb

Catalog No: #52808

Package Size: #52808-1 50ul #52808-2 100ul

Orders: order@signalwayantibody.com

Support: tech@signalwayantibody.com

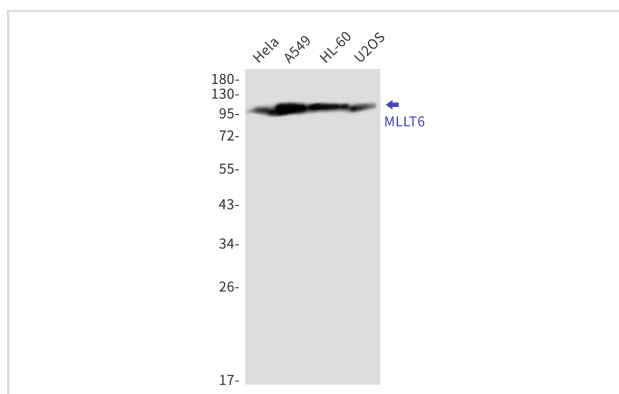
Description

Product Name	MLLT6 Rabbit mAb
Host Species	Recombinant Rabbit
Clonality	Monoclonal antibody
Clone No.	S03-6F4
Isotype	IgG
Purification	Affinity Purified
Applications	WB
Species Reactivity	Human,Mouse,Rat
Immunogen Description	Recombinant protein of human MLLT6
Conjugates	Unconjugated
Modification	Unmodification
Other Names	AF17
Accession No.	Swiss-Prot:P55198GeneID:4302
Calculated MW	Calculated MW:112 kDa,Observed MW:112 kDa
Formulation	50nM Tris-Glycine(pH 7.4), 0.15M NaCl, 40% Glycerol, 0.01% Sodium azide and 0.05% BSA
Storage	Store at 4°C short term. Aliquot and store at -20°C long term. Avoid freeze/thaw cycles.

Application Details

WB: 1/1000

Images



Western blot detection of MLLT6 in HeLa,A549,HL-60,U2OS cell lysates using MLLT6 Rabbit mAb(1:1000 diluted).Predicted band size:112kDa.Observed band size:112kDa.

Background

Enables histone binding activity and nucleosome binding activity. Predicted to be involved in positive regulation of transcription by RNA polymerase II. Predicted to act upstream of or within several processes, including negative regulation of histone H3-K79 methylation; renal potassium excretion; and renal sodium excretion. Predicted to be active in nucleus. [provided by Alliance of Genome Resources, Apr 2022]

Note: This product is for in vitro research use only and is not intended for use in humans or animals.