

VWF Rabbit Polyclonal Antibody

Catalog No: #29678

Orders: order@signalwayantibody.comSupport: tech@signalwayantibody.com

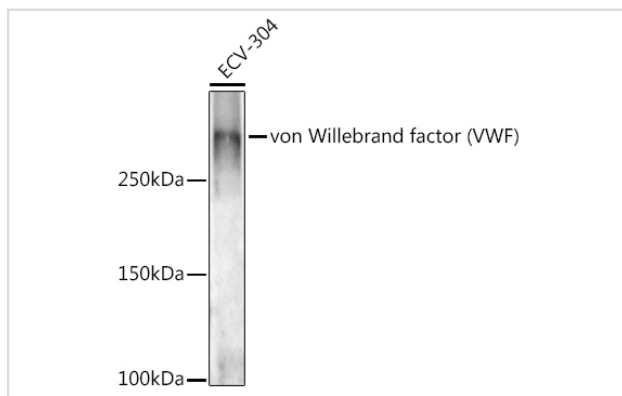
Description

Product Name	VWF Rabbit Polyclonal Antibody
Host Species	Rabbit
Clonality	Polyclonal
Isotype	IgG
Purification	Affinity purification
Applications	WB,IHC
Species Reactivity	Human,Rat
Immunogen Description	A synthetic peptide of human von Willebrand factor (VWF) (NP_000543.2).
Other Names	VWF;F8VWF;VWD
Accession No.	Uniprot:P04275GenelD:7450
Calculated MW	38kDa/309kDa
SDS-PAGE MW	309KDa
Formulation	PBS with 0.02% sodium azide,50% glycerol,pH7.3.
Storage	Store at -20°C. Avoid freeze / thaw cycles.

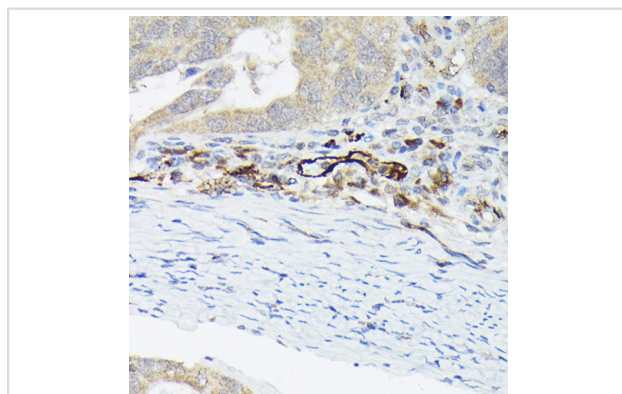
Application Details

WB □ 1:500 - 1:1000 IHC □ 1:50 - 1:200

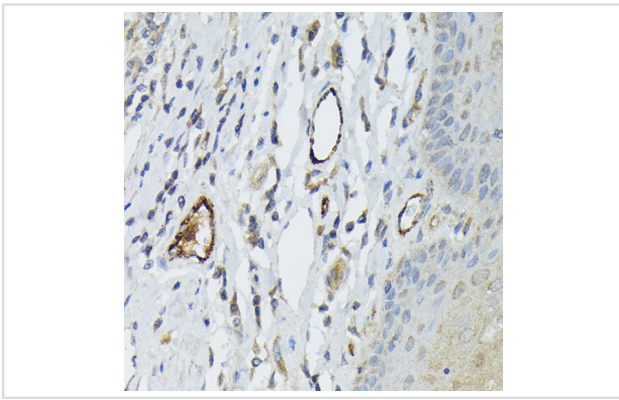
Images



Western blot analysis of extracts of ECV-304 cells, using von Willebrand factor (VWF) antibody.



Immunohistochemistry of paraffin-embedded human colon carcinoma using von Willebrand factor (VWF) Rabbit pAb.



Immunohistochemistry of paraffin-embedded human esophagus using von Willebrand factor (VWF) Rabbit pAb.

Background

This gene encodes a glycoprotein involved in hemostasis. The encoded preproprotein is proteolytically processed following assembly into large multimeric complexes. These complexes function in the adhesion of platelets to sites of vascular injury and the transport of various proteins in the blood. Mutations in this gene result in von Willebrand disease, an inherited bleeding disorder. An unprocessed pseudogene has been found on chromosome 22.

Note: This product is for in vitro research use only and is not intended for use in humans or animals.