

## YTHDF1 Rabbit Polyclonal Antibody

Catalog No: #53535



Package Size: #53535-1 50ul #53535-2 100ul

Orders: [order@signalwayantibody.com](mailto:order@signalwayantibody.com)Support: [tech@signalwayantibody.com](mailto:tech@signalwayantibody.com)

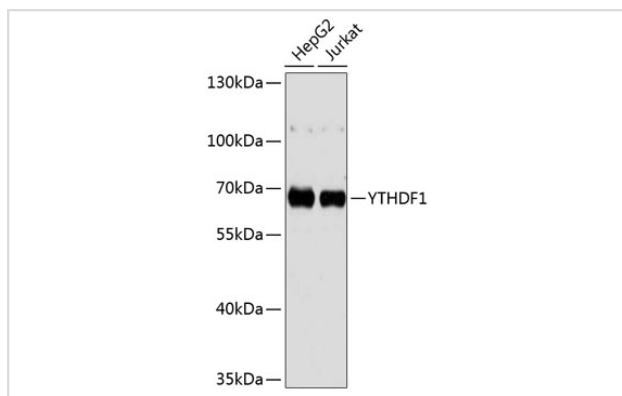
## Description

Product Name	YTHDF1 Rabbit Polyclonal Antibody
Host Species	Rabbit
Clonality	Polyclonal
Isotype	IgG
Purification	Affinity purification
Applications	WB,IF
Species Reactivity	Human,Mouse,Rat
Immunogen Description	Recombinant fusion protein of human YTHDF1 (NP_060268.2).
Other Names	YTHDF1;C20orf21
Accession No.	Swiss Prot:Q9BYJ9Gene ID:54915
Calculated MW	20kDa/60kDa
SDS-PAGE MW	61kDa
Formulation	Buffer: PBS with 0.02% sodium azide,50% glycerol,pH7.3.
Storage	Store at -20°C. Avoid freeze / thaw cycles.

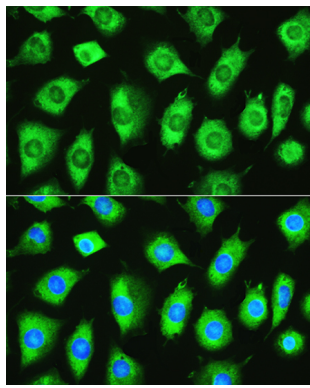
## Application Details

WB □ 1:500 - 1:2000 IF □ 1:50 - 1:200

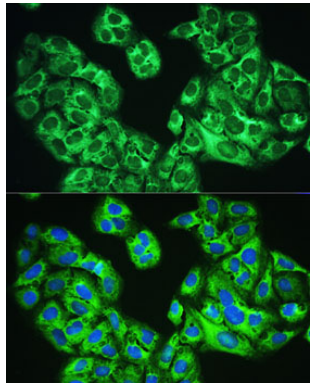
## Images



Western blot analysis of extracts of various cell lines, using YTHDF1 antibody.



Immunofluorescence analysis of L929 cells using YTHDF1 Rabbit pAb.



Immunofluorescence analysis of U2OS cells using YTHDF1 Rabbit pAb.

## Background

-

Note: This product is for in vitro research use only and is not intended for use in humans or animals.