

TBL1XR1 Rabbit Polyclonal Antibody

Catalog No: #53602



Package Size: #53602-1 50ul #53602-2 100ul

Orders: order@signalwayantibody.com

Support: tech@signalwayantibody.com

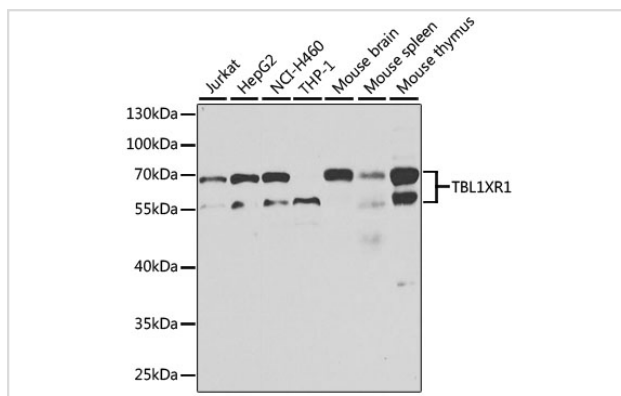
Description

Product Name	TBL1XR1 Rabbit Polyclonal Antibody
Host Species	Rabbit
Clonality	Polyclonal
Isotype	IgG
Purification	Affinity purification
Applications	WB,IF
Species Reactivity	Human,Mouse
Immunogen Description	Recombinant fusion protein of human TBL1XR1 (NP_078941.2).
Other Names	TBL1XR1;C21;DC42;IRA1;MRD41;TBLR1
Accession No.	Swiss Prot:Q9BZK7Gene ID:79718
Calculated MW	55kDa
SDS-PAGE MW	55-70kDa
Formulation	Buffer: PBS with 0.02% sodium azide,50% glycerol,pH7.3.
Storage	Store at -20°C. Avoid freeze / thaw cycles.

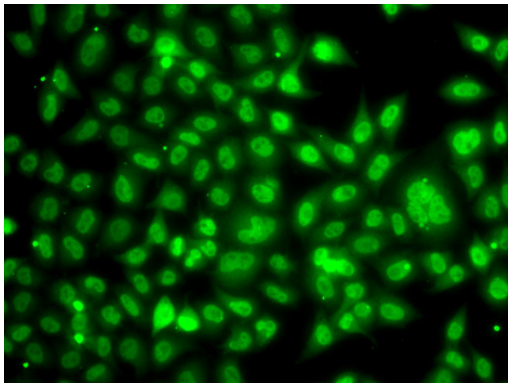
Application Details

WB □ 1:500 - 1:2000 IF □ 1:50 - 1:200

Images



Western blot analysis of extracts of various cell lines, using TBL1XR1 antibody.



Immunofluorescence analysis of A549 cells using TBL1XR1 antibody.

Background

This gene is a member of the WD40 repeat-containing gene family and shares sequence similarity with transducin (beta)-like 1X-linked (TBL1X). The protein encoded by this gene is thought to be a component of both nuclear receptor corepressor (N-CoR) and histone deacetylase 3 (HDAC 3) complexes, and is required for transcriptional activation by a variety of transcription factors. Mutations in these gene have been associated with some autism spectrum disorders, and one finding suggests that haploinsufficiency of this gene may be a cause of intellectual disability with dysmorphism. Mutations in this gene as well as recurrent translocations involving this gene have also been observed in some tumors.

Note: This product is for in vitro research use only and is not intended for use in humans or animals.