

## GSDMC Rabbit Polyclonal Antibody

Catalog No: #53877



Package Size: #53877-1 50ul #53877-2 100ul

Orders: [order@signalwayantibody.com](mailto:order@signalwayantibody.com)Support: [tech@signalwayantibody.com](mailto:tech@signalwayantibody.com)

## Description

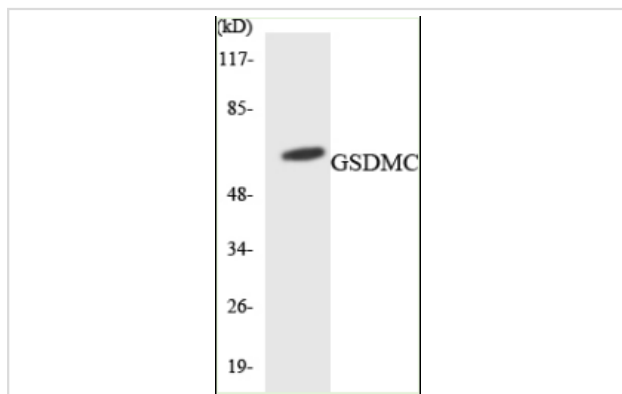
Product Name	GSDMC Rabbit Polyclonal Antibody
Host Species	Rabbit
Clonality	Polyclonal
Isotype	IgG
Purification	The antibody was affinity-purified from rabbit antiserum by affinity-chromatography using epitope-specific immunogen.
Applications	WB,IF
Species Reactivity	Human;Mouse;Rat
Immunogen Description	The antiserum was produced against synthesized peptide derived from human GSDMC.
Other Names	GSDMC;MLZE
Accession No.	Swiss Prot:Q9BYG8Gene ID:56169
Calculated MW	55kD
SDS-PAGE MW	58kDa
Formulation	Liquid in PBS containing 50% glycerol, 0.5% BSA and 0.02% sodium azide.
Storage	Store at -20°C. Avoid freeze / thaw cycles.

## Application Details

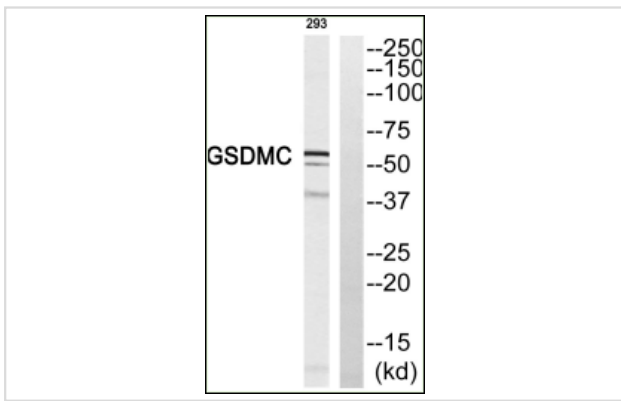
WB 1:500-2000

IF 1:100-300

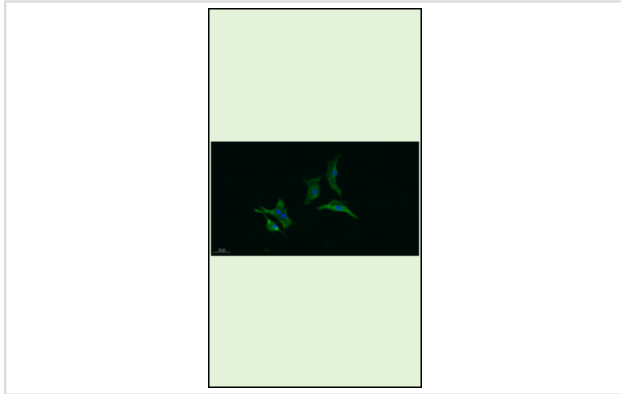
## Images



Western blot analysis of the lysates from HepG2 cells .



Western blot analysis of GSDMC Antibody. The lane on the right is blocked with the GSDMC peptide.



Immunofluorescence analysis of A549. 1,primary Antibody was diluted at 1:200(4°C overnight). 2, Goat Anti Rabbit IgG (H&L) - Alexa Fluor 488 Secondary antibody was diluted at 1:1000(room temperature, 50min).3, Picture B: DAPI(blue) 10min.

## Background

-

Note: This product is for in vitro research use only and is not intended for use in humans or animals.