

# DLG3 Rabbit Polyclonal Antibody

Catalog No: #54302



Package Size: #54302-1 50ul #54302-2 100ul

Orders: [order@signalwayantibody.com](mailto:order@signalwayantibody.com)

Support: [tech@signalwayantibody.com](mailto:tech@signalwayantibody.com)

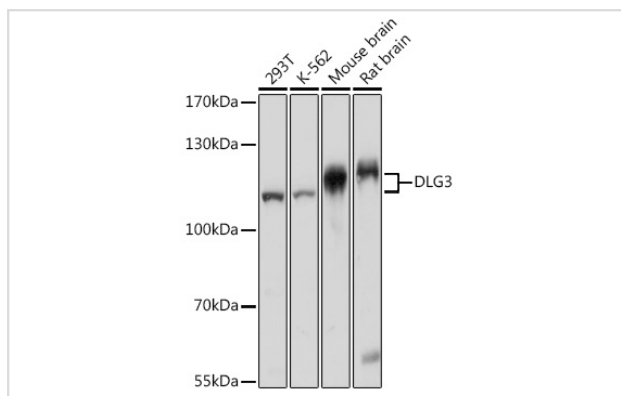
## Description

Product Name	DLG3 Rabbit Polyclonal Antibody
Host Species	Rabbit
Clonality	Polyclonal
Isotype	IgG
Purification	Affinity purification
Applications	WB,IHC
Species Reactivity	Human,Mouse,Rat
Immunogen Description	Recombinant fusion protein of human DLG3 (NP_066943.2).
Other Names	DLG3;MRX;MRX90;NEDLG;PPP1R82;SAP102;XLMR
Accession No.	Swiss Prot:Q92796Gene ID:1741
Calculated MW	42kDa/57kDa/90kDa
SDS-PAGE MW	110kDa/115kDa
Formulation	Buffer: PBS with 0.02% sodium azide,50% glycerol,pH7.3.
Storage	Store at -20°C. Avoid freeze / thaw cycles.

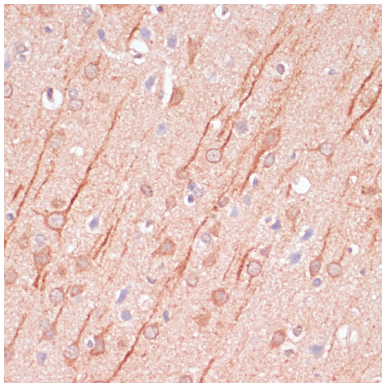
## Application Details

WB □ 1:2000 - 1:5000 IHC □ 1:50 - 1:200

## Images



Western blot analysis of extracts of various cell lines, using DLG3 pAb.



Immunohistochemistry of paraffin-embedded rat brain using DLG3 antibody.

## Background

This gene encodes a member of the membrane-associated guanylate kinase protein family. The encoded protein may play a role in clustering of NMDA receptors at excitatory synapses. It may also negatively regulate cell proliferation through interaction with the C-terminal region of the adenomatous polyposis coli tumor suppressor protein. Mutations in this gene have been associated with X-linked mental retardation. Alternatively spliced transcript variants have been described.

Note: This product is for in vitro research use only and is not intended for use in humans or animals.