

NDUFB1 Rabbit Polyclonal Antibody

Catalog No: #54325



Package Size: #54325-1 50ul #54325-2 100ul

Orders: order@signalwayantibody.comSupport: tech@signalwayantibody.com

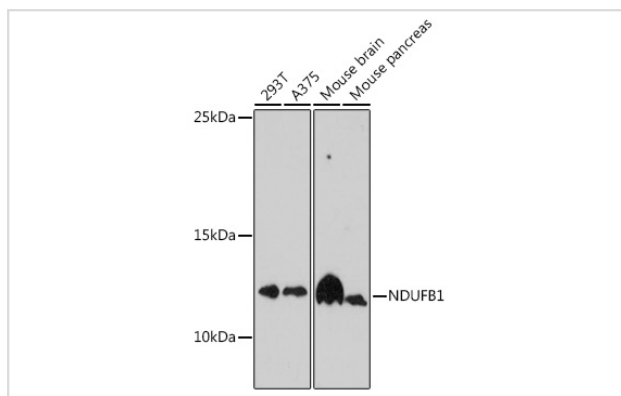
Description

Product Name	NDUFB1 Rabbit Polyclonal Antibody
Host Species	Rabbit
Clonality	Polyclonal
Isotype	IgG
Purification	Affinity purification
Applications	WB,IF
Species Reactivity	Human,Mouse
Immunogen Description	Recombinant fusion protein of human NDUFB1 (NP_004536.2).
Other Names	NDUFB1;CI-MNLL;CI-SGDH;MNLL
Accession No.	Swiss Prot:O75438Gene ID:4707
Calculated MW	6kDa/11kDa
SDS-PAGE MW	11kDa
Formulation	Buffer: PBS with 0.02% sodium azide,50% glycerol,pH7.3.
Storage	Store at -20°C. Avoid freeze / thaw cycles.

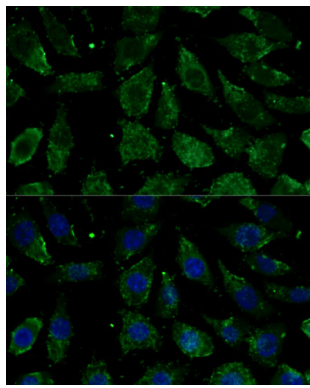
Application Details

WB □ 1:500 - 1:2000 IF □ 1:50 - 1:200

Images



Western blot analysis of extracts of various cell lines, using NDUFB1 antibody.



Immunofluorescence analysis of L929 cells using NDUFB1 antibody.

Background

-

Note: This product is for in vitro research use only and is not intended for use in humans or animals.