

TCF4 Rabbit Polyclonal Antibody

Catalog No: #54337

Package Size: #54337-1 50ul #54337-2 100ul

Orders: order@signalwayantibody.com

Support: tech@signalwayantibody.com

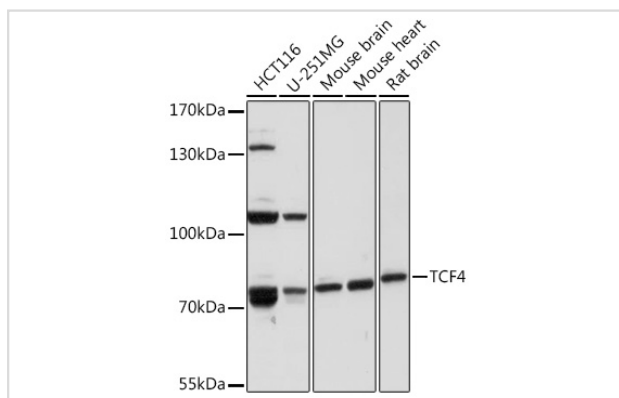
Description

Product Name	TCF4 Rabbit Polyclonal Antibody
Host Species	Rabbit
Clonality	Polyclonal
Isotype	IgG
Purification	Affinity purification
Applications	WB,IHC,IF
Species Reactivity	Human,Mouse,Rat
Immunogen Description	Recombinant protein of human TCF4.
Other Names	TCF4;E2-2;FECD3;ITF-2;ITF2;PTHS;SEF-2;SEF2;SEF2-1;SEF2-1A;SEF2-1B;SEF2-1D;TCF-4;bHLHb19;TCF4
Accession No.	Swiss Prot:P15884Gene ID:6925
Calculated MW	48-71kDa
SDS-PAGE MW	71kDa
Formulation	Buffer: PBS with 0.02% sodium azide,50% glycerol,pH7.3.
Storage	Store at -20°C. Avoid freeze / thaw cycles.

Application Details

WB □ 1:500 - 1:2000 IHC □ 1:50 - 1:200 IF □ 1:50 - 1:200

Images



Western blot analysis of extracts of various cell lines, using TCF4 Rabbit pAb.

Background

This gene encodes transcription factor 4, a basic helix-loop-helix transcription factor. The encoded protein recognizes an E-box binding site (CANNTG) - a motif first identified in immunoglobulin enhancers. This gene is broadly expressed, and may play an important role in nervous system development. Defects in this gene are a cause of Pitt-Hopkins syndrome. In addition, an intronic CTG repeat normally numbering 10-37 repeat units can expand to >50 repeat units and cause Fuchs endothelial corneal dystrophy. Multiple alternatively

spliced transcript variants that encode different proteins have been described.

Note: This product is for in vitro research use only and is not intended for use in humans or animals.