

MAML2 Rabbit Polyclonal Antibody

Catalog No: #54397



Package Size: #54397-1 50ul #54397-2 100ul

Orders: order@signalwayantibody.com

Support: tech@signalwayantibody.com

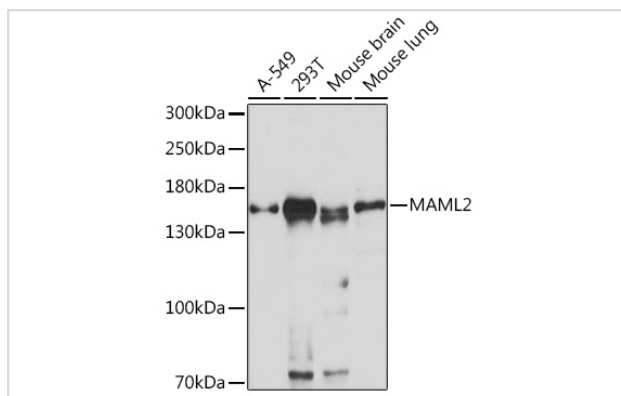
Description

Product Name	MAML2 Rabbit Polyclonal Antibody
Host Species	Rabbit
Clonality	Polyclonal
Isotype	IgG
Purification	Affinity purification
Applications	WB,IF
Species Reactivity	Human,Mouse,Rat
Immunogen Description	A synthetic peptide of human MAML2 (NP_115803.1).
Other Names	MAML2;MAM-3;MAM2;MAM3;MLL-MAML2
Accession No.	Swiss Prot:Q8IZL2Gene ID:84441
Calculated MW	—
SDS-PAGE MW	150kDa
Formulation	Buffer: PBS with 0.02% sodium azide,50% glycerol,pH7.3.
Storage	Store at -20°C. Avoid freeze / thaw cycles.

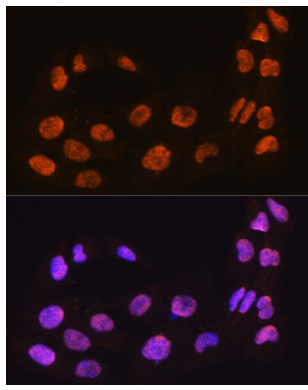
Application Details

WB □ 1:500 - 1:2000 IF □ 1:50 - 1:200

Images



Western blot analysis of extracts of various cell lines, using MAML2 Rabbit pAb.



Immunofluorescence analysis of C6 cells using MAML2 antibody.

Background

The protein encoded by this gene is a member of the Mastermind-like family of proteins. All family members are proline and glutamine-rich, and contain a conserved basic domain that binds the ankyrin repeat domain of the intracellular domain of the Notch receptors (ICN1-4) in their N-terminus, and a transcriptional activation domain in their C-terminus. This protein binds to an extended groove that is formed by the interaction of CBF1, Suppressor of Hairless, LAG-1 (CSL) with ICN, and positively regulates Notch signaling. High levels of expression of this gene have been observed in several B cell-derived lymphomas. Translocations resulting in fusion proteins with both CRTC1 and CRTC3 have been implicated in the development of mucoepidermoid carcinomas, while a translocation event with CXCR4 has been linked with chronic lymphocytic leukemia (CLL). Copy number variation in the polyglutamine tract has been observed.

Note: This product is for in vitro research use only and is not intended for use in humans or animals.