

MET Rabbit Polyclonal Antibody

Catalog No: #54414



Package Size: #54414-1 50ul #54414-2 100ul

Orders: order@signalwayantibody.com

Support: tech@signalwayantibody.com

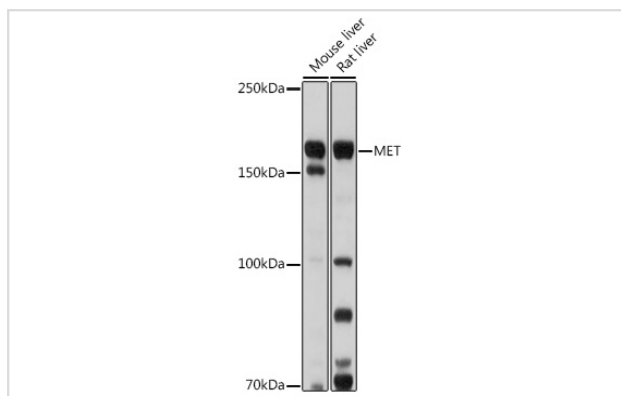
Description

Product Name	MET Rabbit Polyclonal Antibody
Host Species	Rabbit
Clonality	Polyclonal
Isotype	IgG
Purification	Affinity purification
Applications	WB,IHC
Species Reactivity	Human,Mouse,Rat
Immunogen Description	Recombinant protein of human MET.
Other Names	MET;AUTS9;DFNB97;HGFR;RCCP2;c-Met
Accession No.	Swiss Prot:P08581Gene ID:4233
Calculated MW	85kDa/155kDa/157kDa
SDS-PAGE MW	170KDa
Formulation	Buffer: PBS with 0.02% sodium azide,50% glycerol,pH7.3.
Storage	Store at -20°C. Avoid freeze / thaw cycles.

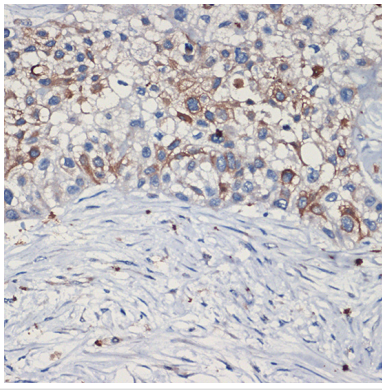
Application Details

WB □ 1:2000 - 1:5000 IHC □ 1:50 - 1:200

Images



Western blot analysis of extracts of various cell lines, using MET antibody.



Immunohistochemistry of paraffin-embedded human lung cancer using MET Rabbit pAb.

Background

This gene encodes a member of the receptor tyrosine kinase family of proteins and the product of the proto-oncogene MET. The encoded preproprotein is proteolytically processed to generate alpha and beta subunits that are linked via disulfide bonds to form the mature receptor. Further processing of the beta subunit results in the formation of the M10 peptide, which has been shown to reduce lung fibrosis. Binding of its ligand, hepatocyte growth factor, induces dimerization and activation of the receptor, which plays a role in cellular survival, embryogenesis, and cellular migration and invasion. Mutations in this gene are associated with papillary renal cell carcinoma, hepatocellular carcinoma, and various head and neck cancers. Amplification and overexpression of this gene are also associated with multiple human cancers.

Note: This product is for in vitro research use only and is not intended for use in humans or animals.