

NXPH4 Rabbit Polyclonal Antibody

Catalog No: #54500



Package Size: #54500-1 50ul #54500-2 100ul

Orders: order@signalwayantibody.comSupport: tech@signalwayantibody.com

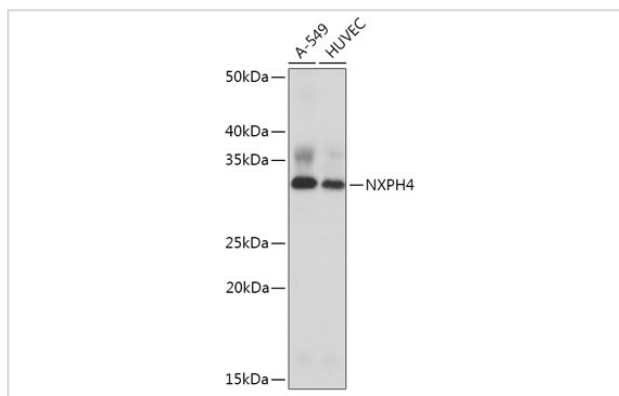
Description

Product Name	NXPH4 Rabbit Polyclonal Antibody
Host Species	Rabbit
Clonality	Polyclonal
Isotype	IgG
Purification	Affinity purification
Applications	WB,IHC
Species Reactivity	Human
Immunogen Description	Recombinant protein of human NXPH4 .
Other Names	NPH4;NXPH4
Accession No.	Swiss Prot:O95158Gene ID:11247
Calculated MW	33kDa
SDS-PAGE MW	33KDa
Formulation	Buffer: PBS with 0.02% sodium azide,50% glycerol,pH7.3.
Storage	Store at -20°C. Avoid freeze / thaw cycles.

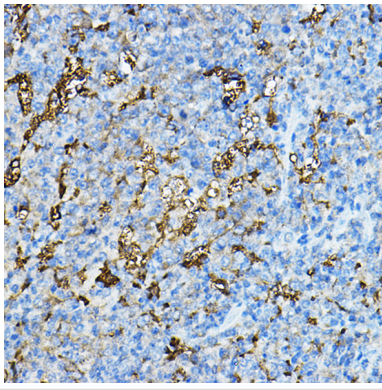
Application Details

WB □ 1:2000 - 1:5000 IHC □ 1:50 - 1:200

Images



Western blot analysis of extracts of various cell lines, using NXPH4 antibody.



Immunohistochemistry of paraffin-embedded mouse spleen using NXP4 Rabbit pAb.

Background

-

Note: This product is for in vitro research use only and is not intended for use in humans or animals.